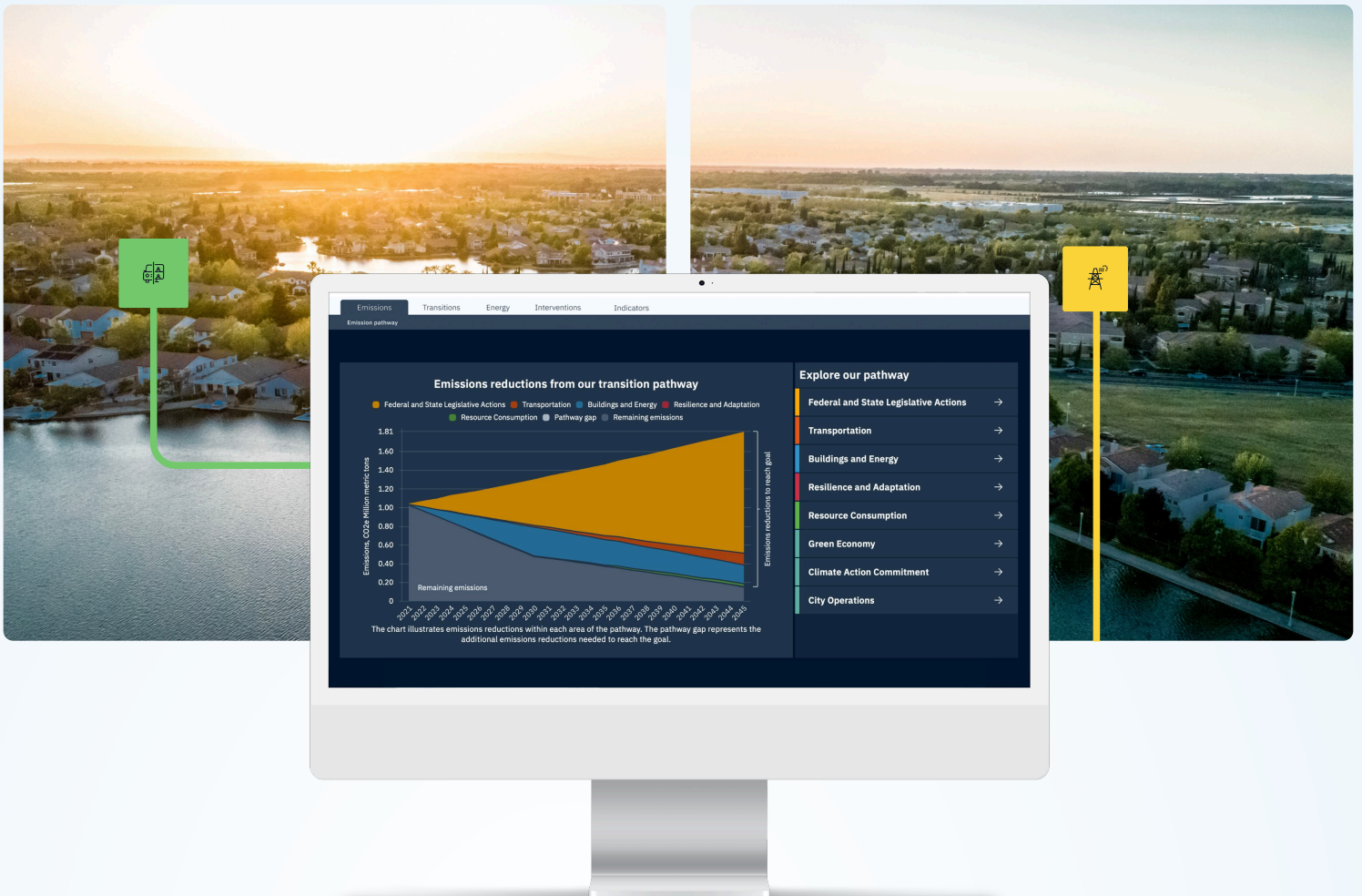


ClearPath 2.0 Case Study

The Story Behind Elk Grove's Climate Compass

In one of California's fastest-growing cities, Elk Grove is turning climate planning into local action. Learn how the City of Elk Grove used ClearPath 2.0 to communicate and operationalize its climate action plan.



Case Summary

Located just south of Sacramento, Elk Grove is a rapidly growing community of more than 180,000 residents, with a strong focus on livability, economic growth, and environmental stewardship. Like many inland California cities, it faces increasing risks from extreme heat, flooding, wildfire smoke, and regional air quality challenges.

The Highlights:

- The City of Elk Grove, California, developed its third climate action plan, the Elk Grove Climate Compass, to guide emissions reductions and the City's efforts to adapt to anticipated climate impacts.
- The City wanted to prioritize high-impact and near-term actions that could be clearly implemented, consistently monitored, and transparently communicated.
- Elk Grove partnered with Ascent Environmental, Inc. to track progress, quantify impacts, and increase public accessibility, pioneering the use of ClearPath 2.0.



About ClearPath 2.0

ClearPath 2.0 is the state-of-the-art climate platform in the US. It is provided by ICLEI - Local Governments for Sustainability USA (ICLEI USA) and developed by ClimateView.



“Transparency within climate action planning builds trust and accountability with our community. ClearPath 2.0 provides an engaging, transparent platform for the City to share the actions in our Climate Compass and provides understandable results to our community, which will help drive local engagement and involvement.”

— **Carrie Whitlock, AICP**
Long Range Planning Program Manager,
City of Elk Grove

The Approach

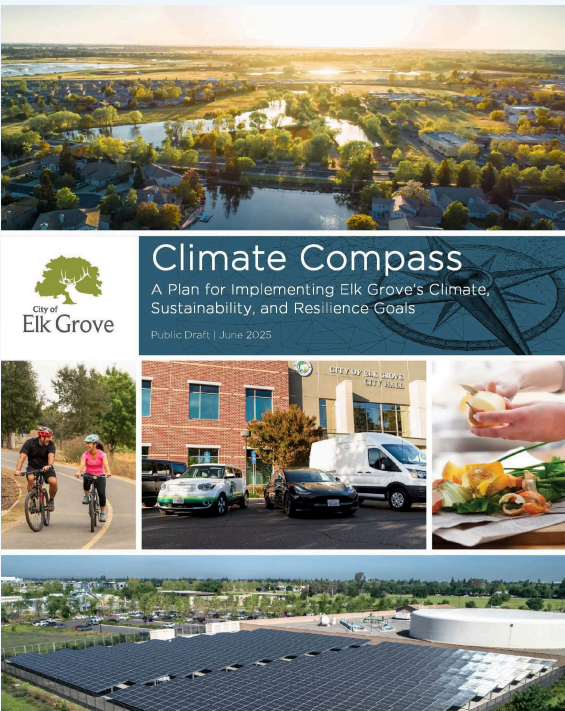


Photo: City of Elk Grove. Read the [Climate Compass plan](#).

Elk Grove needed more than a static plan. City staff wanted a way to move from planning to daily implementation across departments while also making climate action understandable and visible to the community. They prioritized interactive visualization because they saw that static reports and spreadsheets did not connect with residents or stakeholders in a meaningful way. A dashboard enabled them to turn complex climate data into clear, usable, and relevant information.

Civic innovation is a core value for the City. Staff focus on making government more efficient, effective, and responsive, and place a strong emphasis on helping residents see and engage with local climate progress.

To make that shift, the City and Ascent used ClearPath 2.0 as the central hub for Elk Grove's Climate Compass. Using the Core Module, accessed through ICLEI USA membership, staff track actions in detail and link them to measurable emissions outcomes, creating consistent data for decision-making.

The Dashboard Add-On turns that data into a living plan accessible to all. It connects emissions sources to the actions that reduce them, strengthens coordination, and helps community members see how their actions can support Elk Grove's long-term climate goals.

Results & Impact



The City of Elk Grove invested more than 200 staff hours to build a digital platform that makes climate action visible and accessible to City staff and the public, establishing ClearPath 2.0 as the central hub for tracking implementation and sharing progress on the Climate Compass.

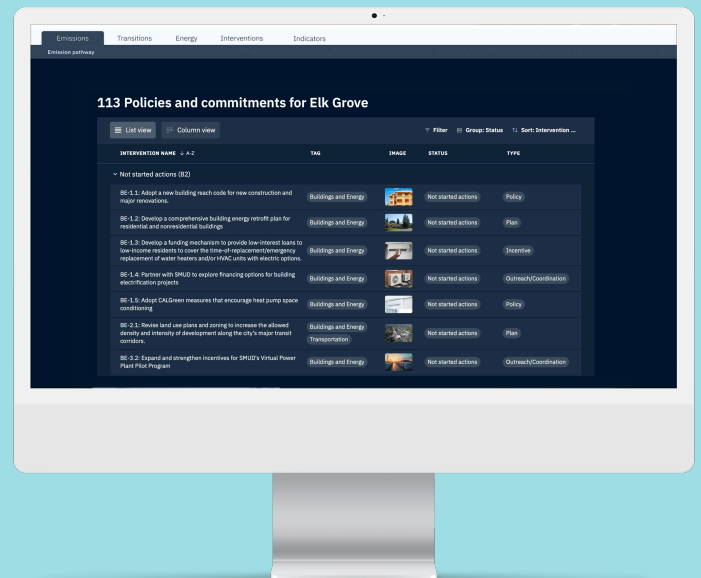
The team migrated existing emissions data into ClearPath 2.0, integrating historical analysis with ongoing tracking into one system.

That upfront investment is delivering long-term value, reducing time spent on reporting, increasing transparency, and giving the City a clear view of progress toward its climate goals.

As the Climate Compass strategies move forward, ClearPath 2.0 supports tracking, coordination, and transparency across departments, strengthening the City's management and communication of climate action.

Climate Compass ClearPath 2.0 Dashboard now:

- Tracks progress and feeds updates into a public dashboard, allowing staff to assess performance and adjust actions
- Provides residents with up-to-date information on emissions reductions and project status
- Serves as a single source of information across departments, improving coordination and efficiency
- Standardizes data and methods, enabling faster and more accurate future greenhouse gas inventories



Unexpected Outcomes

ClearPath 2.0 did not change Elk Grove’s data sources, but it did change how the City uses that data.

The platform builds on traditional inventories but adds detail that helps staff track progress against specific actions. Instead of only reporting total emissions, the City can now connect actions to outcomes and monitor performance over time.

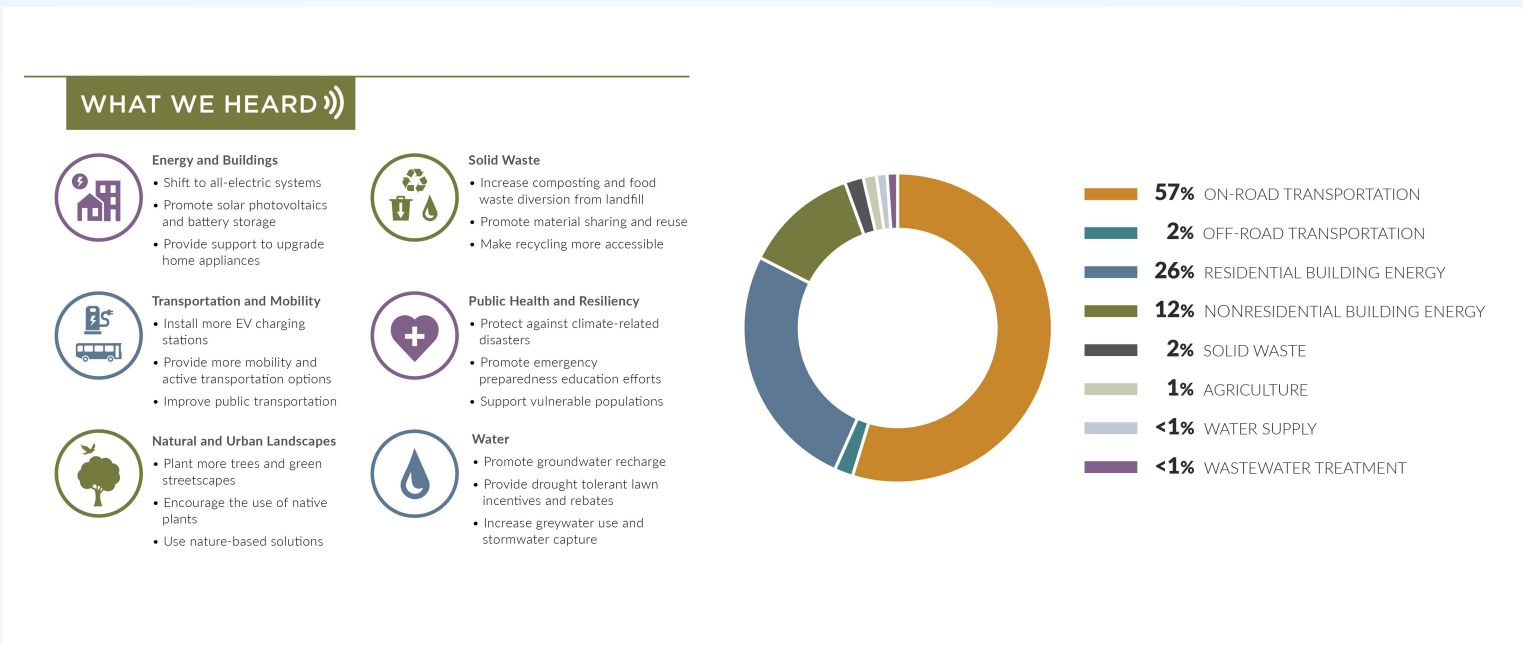
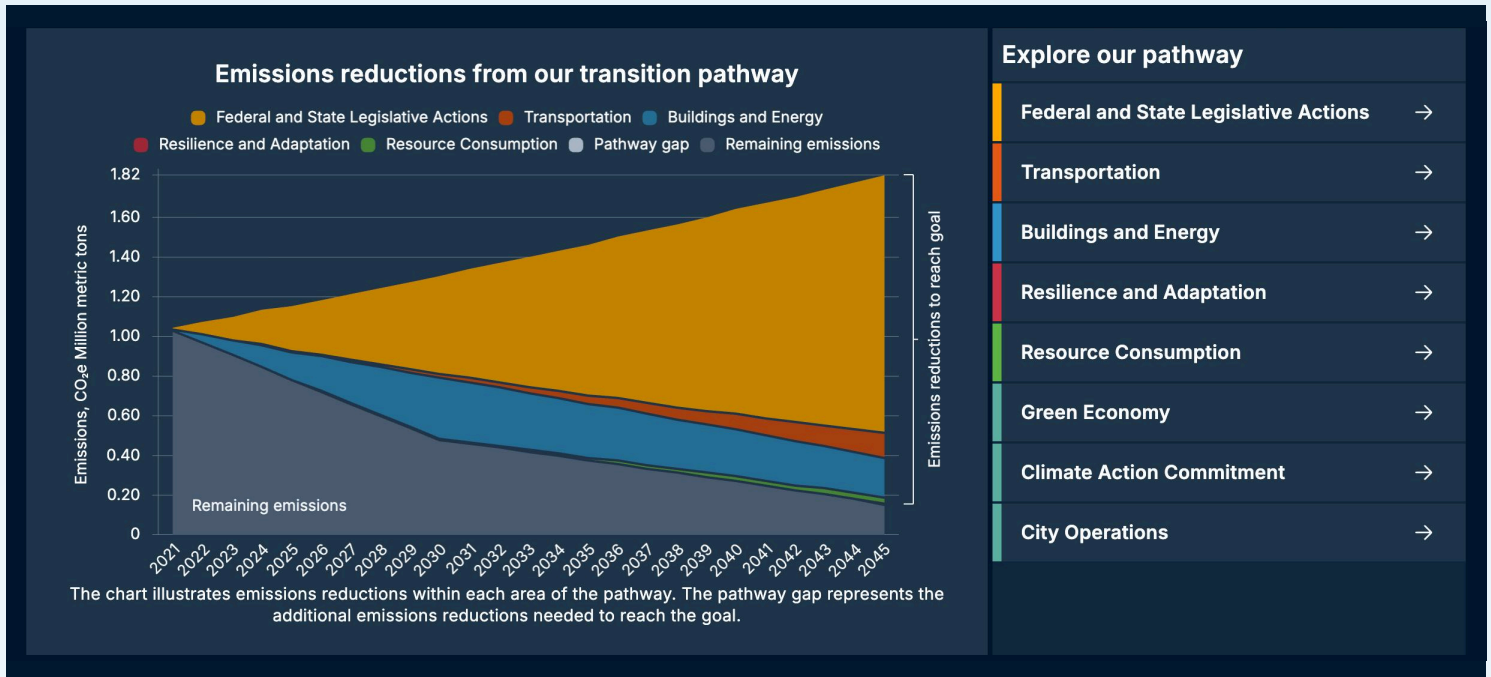


Photo: City of Elk Grove. Read the [Climate Compass plan](#).



“As climate planning evolves beyond traditional static documents, ClearPath 2.0 is helping communities create more responsive, accountable, and effective climate strategies.”

— **Hannah Kornfeld, AICP**
Climate Practice Leader, Project Lead for Elk Grove Climate Compass, Ascent



What's Next

Following the adoption of the Climate Compass, the City of Elk Grove intends to:

- Implement high-impact, near-term actions identified in the plan
- Track implementation status and key performance indicators for each action within ClearPath 2.0
- Monitor emissions impacts consistently over time
- Continue to have meaningful community engagement around climate action



ClearPath 2.0 will continue to serve as the City's primary tool for keeping this progress up to date, transparent, and accountable to staff, elected officials, and the community.