

A full-page background image of the Golden Gate Bridge in San Francisco, viewed from a low angle looking up the bridge deck towards the top of the towers. The sky is a mix of orange, pink, and blue, suggesting sunset or sunrise. The bridge's iconic red-orange steel structure is prominent.

# ClearPath 2.0

## Trained Professionals Program

A Guide to the  
Trained Professionals Program





# Trained Professionals Program

## What is the Trained Professionals Program

**Trained Professionals** ensure that U.S. local governments receive high-quality support from Service Providers and can scale adoption and delivery of the ClearPath 2.0 platform.

Provided by ICLEI - Local Governments for Sustainability USA (ICLEI USA) and developed by ClimateView, **ClearPath 2.0 is a next-generation strategy platform** built for the realities of local governments. It moves public-sector teams from planning to delivery, helping them create measurable, fundable climate strategies — all in one system.

**Core modules are included** in the ICLEI USA Membership and represent a substantial part of ClearPath 2.0's functionalities, with better experience and new, powerful functionalities.

The Program ensures that Service Providers get the training required to effectively and successfully deliver ClearPath 2.0 services, while **giving local governments an easy way to find qualified partners** who can support their climate action planning in the platform.

Trained Professionals are recognized implementation partners — equipped to provide advisory services, technical know-how, and delivery capacity.





## What are the Benefits of Participating?



### National Recognition & Visibility

As a Trained Professional, your name will be publicly listed and recognized with ICLEI USA's 300+ network of local government members leading on climate action through [ICLEI USA's website](#), social media recognition and the potential for your work to be highlighted through newsletter mentions, case studies, and events.



### Discounted Add Ons

As a Trained Professional, you receive reseller rights to Add-Ons, allowing you to purchase them at a preferential price for inclusion in client projects. This Trained Professionals Price is currently 20% below the list price (subject to change).



### Access to Online Training Materials

Under the Program, you get 12-month access to the self-paced ClearPath 2.0 Training Academy providing detailed guidance on all functionalities.



### Access to a ClearPath 2.0 Training Environment

Every Trained Professional gains access to an individual ClearPath 2.0 "Sandbox" to explore functionalities, test scenarios, and become acquainted with the platform.



### Access to Platform Support

All Trained Professionals receive basic help navigating the platform in the form of personalized support and an online knowledge base.<sup>1</sup>



### Sales Support

As a Trained Professional, you are entitled to 1:1 virtual sessions to support assessment of commercial opportunities, project scoping, and support building ClearPath 2.0 into bid documents. Includes marketing materials, sales materials, and service delivery templates around ClearPath 2.0.



### Exclusive Platform Presentations

Be the first to know about up-and-coming platform updates: Trained Professionals have exclusive access to webinars hosted by ClimateView on new features and thought leadership.



### Opportunity to Participate in the ClearPath 2.0 Technical Working Group (TWG)

All Trained Professionals have the exclusive right to apply to join the TWG, formed by members from local governments, ClimateView, and ICLEI USA. This high-visibility group meets quarterly to share market insights, provide structured feedback to guide platform and service development, and enable collaboration and shared learning.

## Who is Eligible?

Individuals working for for-profit consulting firms or nonprofit organizations providing climate-mitigation service to U.S. jurisdictions. University practitioners and students can participate in trainings offered under the program if connected to a local government project, but are not eligible to be recognized as Trained Professionals.

<sup>1</sup>Platform Support from ICLEI USA, defined as activities that allow a user to successfully log in, access, and get basic help navigating the platform. Platform support does not include "technical support", such as providing climate-mitigation subject-matter expertise. Additional technical or advisory support can be purchased separately according to the menu below.



## How Do I Become a Trained Professional?

- 1. Expression of Interest**  
Express your interest to join the Trained Professionals Program through our [online form](#).
- 2. Confirmation of Eligibility**  
ICLEI USA will conduct a basic screening to ensure you have demonstrated successful delivery of climate-mitigation services to U.S. jurisdictions, including climate action planning and greenhouse gas inventories.
- 3. Invitation**  
Once eligibility is confirmed, you'll receive an invitation to participate in the Trained Professionals Program.
- 4. Standard Agreement**  
Once you accept the invitation, you will be asked to sign a Standard Agreement with ICLEI USA and ClimateView covering: branding, resale discounts, pricing, intellectual property, roles and responsibilities, training and certification, confidentiality, use of ClimateView materials, and compliance with ClearPath 2.0 user terms.
- 5. Payment**  
You receive the invoice for your selected trainings. Onboarding will start once payment is received.
- 6. Complete ClearPath 2.0 Core Module Training**  
Now you are ready to start the training! Training for the Core Module consists of the self-paced course on the Transition Academy and participation in all live sessions.
- 7. Complete Add-Ons Training (optional)**  
Once you've completed the Core Module Training, you can move on to learning how to use the more advanced functionalities of the Add-Ons.
- 8. Renewal**  
You can maintain your recognition and continue to receive benefits under the Program by renewing annually. To renew, all Trained Professionals will need to demonstrate their continued proficiency delivering services in the platform by submitting a client testimonial letter or completing a proficiency quiz.

## How Much Does it Cost to Get Trained?

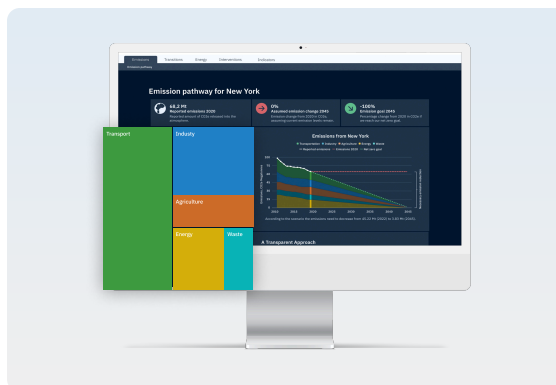
Participation in the Trained Professionals Program is priced according to the chosen Trainings (Core Module, 1-2 Add-Ons, or Full Recognition). All our fee-based Training and Services are designed to support you in delivering climate-mitigation services to U.S. jurisdictions. They also provide opportunities to build skills, expand capacity, and strengthen your consulting practice. Each offering includes the benefits listed above and applies to ClearPath 2.0's Core Modules and Add-Ons.



# Core Modules Training & Recognition

## \$1,200 per person including:

- 📺 Includes self-paced foundational course
- 📅 4x2 hour live cohort training
- 🗣️ 3 hour of technical and sales support



## What You'll Gain as a Consultant

This training prepares you to deliver **comprehensive, high-impact climate planning services** using the Core Modules of ClearPath 2.0. You will be trained in the **Transition Journey methodology**, a step-by-step planning framework that supports local governments as they move from emissions baselining to action and impact tracking.

**Develop emissions inventories** that reflect a jurisdiction's current state (Foundation).

**Model future emissions and set reduction targets** based on policy or planning goals (Targets).

**Design and evaluate policies and interventions** to reach those targets (Actions).

**Track implementation and measure progress over time** using dashboards and monitoring tools (Progress).

**Package your services** to align with each step of the Transition Journey, helping clients navigate complexity and stay accountable.

## Training Format

### Self-Paced Foundation

- Online course (2–3 hours) introducing key platform functions, preparing you for live sessions

### Optional Deep Dive

- 1.5 hour expert session on the Transition Elements Framework
- Included in the package (not required for recognition)

### Live Cohort Trainings

- 4x2 hour trainer-led online sessions
- Structured around Transition Journey
- Covers platform functionalities, client use cases, delivery Blueprints
- Max. 15 participants per cohort

### Technical & Sales Support

- 3 hours of support to help you apply the methodology in real projects, e.g. proposal development or delivery

## Value to Your Practice



Deliver structured, full-spectrum climate services with confidence



Align your consulting approach with a proven, stepwise methodology



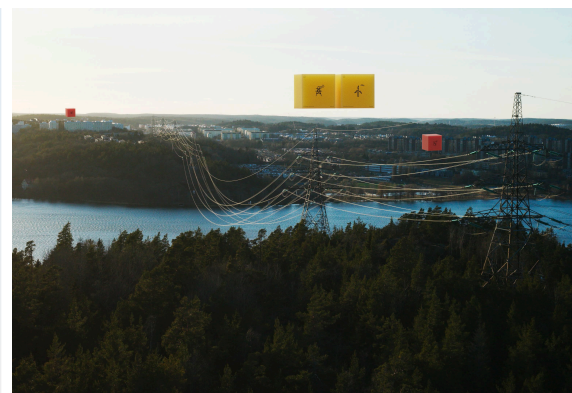
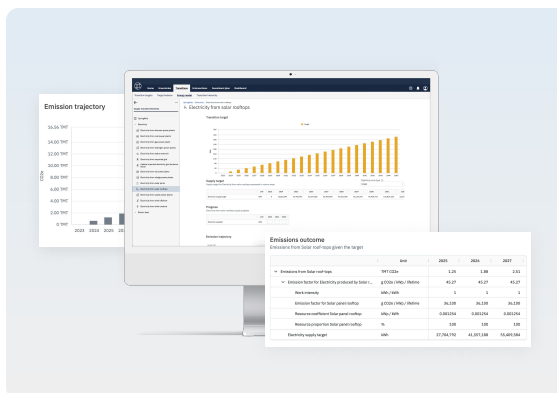
Replace fragmented workflows with guided, platform-based planning



Establish credibility supporting clients at every stage of their climate transition



- 2 hour live cohort training
- 2 hour tailored technical and sales support



This training enables you to confidently deliver energy-focused planning, forecasting, and scenario services using the ClearPath 2.0 Energy Add-On. You will learn to:

**Integrate utility data, local renewables, and efficiency program results** into actionable forecasts that directly inform emissions scenarios and investment decisions.

**Deliver policy-ready insights** that support climate action planning, infrastructure prioritization, and competitive funding proposals—without requiring custom modeling tools or third-party consultants.

## Live Cohort Training

- 2 hour trainer-led online session
- Includes real-time modeling exercises using ClearPath 2.0
- Max. 15 participants per cohort for hands-on support

## Technical & Sales Support

- 2 hour of expert guidance tailored to your first Energy Add-On projects
- Use for scoping, Quality Assurance / Quality Control, or client-facing customization



## Enhance your ability to offer data-driven energy transition planning



## Distinguish your firm in Request for Proposals with data-driven expertise



## Reduce project lift by replacing custom spreadsheets with ready-to-use models





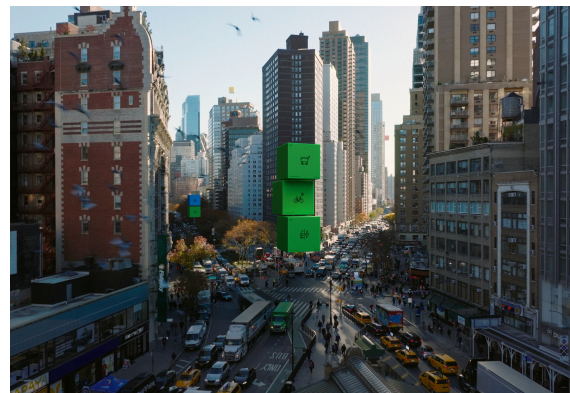
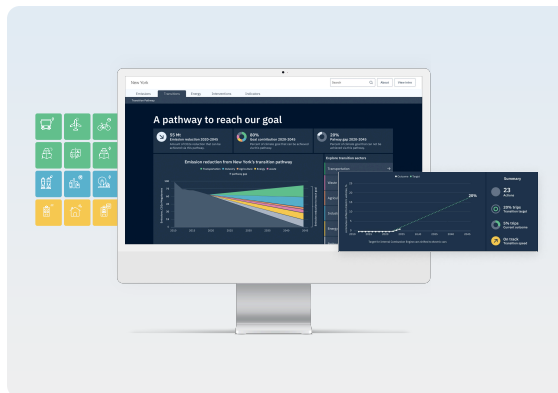
## Strengthen client outcomes through more precise, localized forecasting



# Dashboards Add-On Training & Recognition

## \$700 per person including:

-  2 hour live cohort training
-  2 hour tailored technical and sales support



## What You'll Gain as a Consultant

This training equips you to use the Dashboards Add-On to **help local governments visualize and communicate their climate progress** through real-time, interactive reporting. You will learn how to:

**Configure and publish clear, engaging dashboards** using Emissions, Transitions, Interventions, and Indicators views to support public transparency and communications.

**Reduce reporting workload for your clients** by automating visualization of greenhouse gas inventories, key performance indicators, and policy interventions.

**Create data-driven narratives** that connect policy actions to emissions outcomes, resilience goals, and sector-specific progress (e.g., electric vehicle adoption, renewable energy).

**Guide clients in using dashboards as internal management and coordination tools**, helping align departments and meet reporting obligations efficiently.

## Format and Support

### Live Cohort Training

- 2 hour trainer-led online session
- Learn how to structure a compelling dashboard narrative for public and internal use
- Max. 15 participants per cohort for hands-on support

### Technical & Sales Support

- 2 hour of tailored assistance for scoping, configuration, or client delivery
- Designed to help you integrate the Add-On into real projects with confidence

## Value to Your Practice



Enhance your consulting offering with strong visual communications tools



Position your services to meet growing demand for accountability and data transparency



Reduce manual reporting burden for clients by providing automated, interactive dashboards



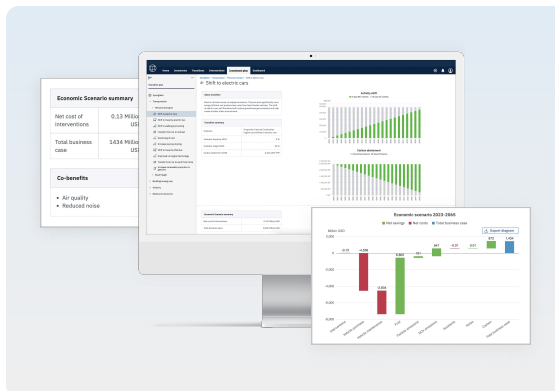
Strengthen Request for Proposals responses with platform-certified expertise in reporting and engagement



# Economics Add-On Training & Recognition

**\$700 per person including:**

- 🎓 2 hour live cohort training
- 💡 2 hour tailored technical and sales support



## What You'll Gain as a Consultant

This training enables you to deliver **robust economic and cost-benefit analyses** using the ClearPath 2.0 Economics Add-On—helping your clients evaluate, justify, and prioritize climate actions from a financial perspective. You will learn how to:

**Model costs, savings, and the Return on Investment from different** climate strategies using built-in economic parameters and assumptions.

**Quantify avoided costs** related to air quality, energy savings, and health impacts to strengthen the financial case for action.

**Support funding proposals** by generating grant-ready outputs that demonstrate financial returns and co-benefits.

**Run comparative analyses** of policy scenarios (e.g., electrification vs. efficiency) to determine the most cost-effective pathways to emissions reduction.

**Analyze economic impacts across sectors** helping clients understand how policy choices affect budgets, businesses, and residents.

## Format and Support

### Live Cohort Training

- 2 hour trainer-led online session
- Focused on working with platform parameters, assumptions, and benefit analysis tools
- Max. 15 participants per cohort for hands-on support

### Technical & Sales Support

- 2 hour of tailored assistance for proposal support, scoping, or client delivery
- Designed to help you confidently deploy the Add-On in real-world consulting contexts

## Value to Your Practice



Expand your service offering with quantitative financial analysis tools



Help clients justify investments and secure state and federal funding



Distinguish your work through data-backed prioritization of climate actions



Streamline project timelines by replacing external studies with in-house economic modeling



## Other Service Offerings

On-Demand Services		Fee
Customized Technical Support	15 hours of 1:1, on-demand technical support per year based on project needs, such as: <ul style="list-style-type: none"> <li>• Recommendations for data collection</li> <li>• Scenario planning</li> <li>• Quality Assurance / Quality Control of project deliverables</li> <li>• Other project-specific needs</li> </ul>	\$3,000
Customized group trainings	In-person or virtual trainings customized to meet the needs of your organization	Based on scope of work

## Discounts

Non-Profits and Staff Groups	Discount
Full Recognition (Core Module, 3 Add-Ons)	\$2600 (receiving 3 for 2 on the Add-On Trainings & Recognition)
Non-profit rate for 501(c)(3) organizations	15%
Purchase of trainings for 5 staff	10%
Purchase of trainings for 10 staff	15%
Purchase of trainings for 15 staff	20%

## What happens after I become a Trained Professional?



### Outreach and Writing Offers

Once you join the Program, you may use ClearPath 2.0 marketing and sales materials to develop leads and strengthen your bids. While ICLEI USA and ClimateView may share pre-qualified opportunities, you take the lead in scoping, drafting, and submitting proposals that incorporate ClearPath 2.0 functionalities. To support your success, the program offers pricing sheets, proposal templates, FAQs, co-branded materials, and dedicated sales support.



### Sales and Contracting

As a Trained Professional, you may contract directly with U.S. jurisdictions and include ClearPath 2.0 platform licensing covering both Core Modules and any Add-Ons as part of your service offering. You receive discounted Add-On pricing through the program's reseller model. While you're responsible for delivering and scope services, you can include ICLEI USA's technical support hours as part of your bid to maximize your delivery quality. We strongly recommend purchasing support hours for your first ClearPath 2.0 projects to build confidence and follow best practices.



### Training and Recognition

If you're pursuing a bid that would benefit from customized ClearPath 2.0 training, contact ICLEI USA at [tpp@iclei.org](mailto:tpp@iclei.org) to request tailored support. After completing projects, we encourage you to submit client testimonial letters which strengthen your professional profile, enhance your visibility in the program, and help streamline your annual recognition renewal.



