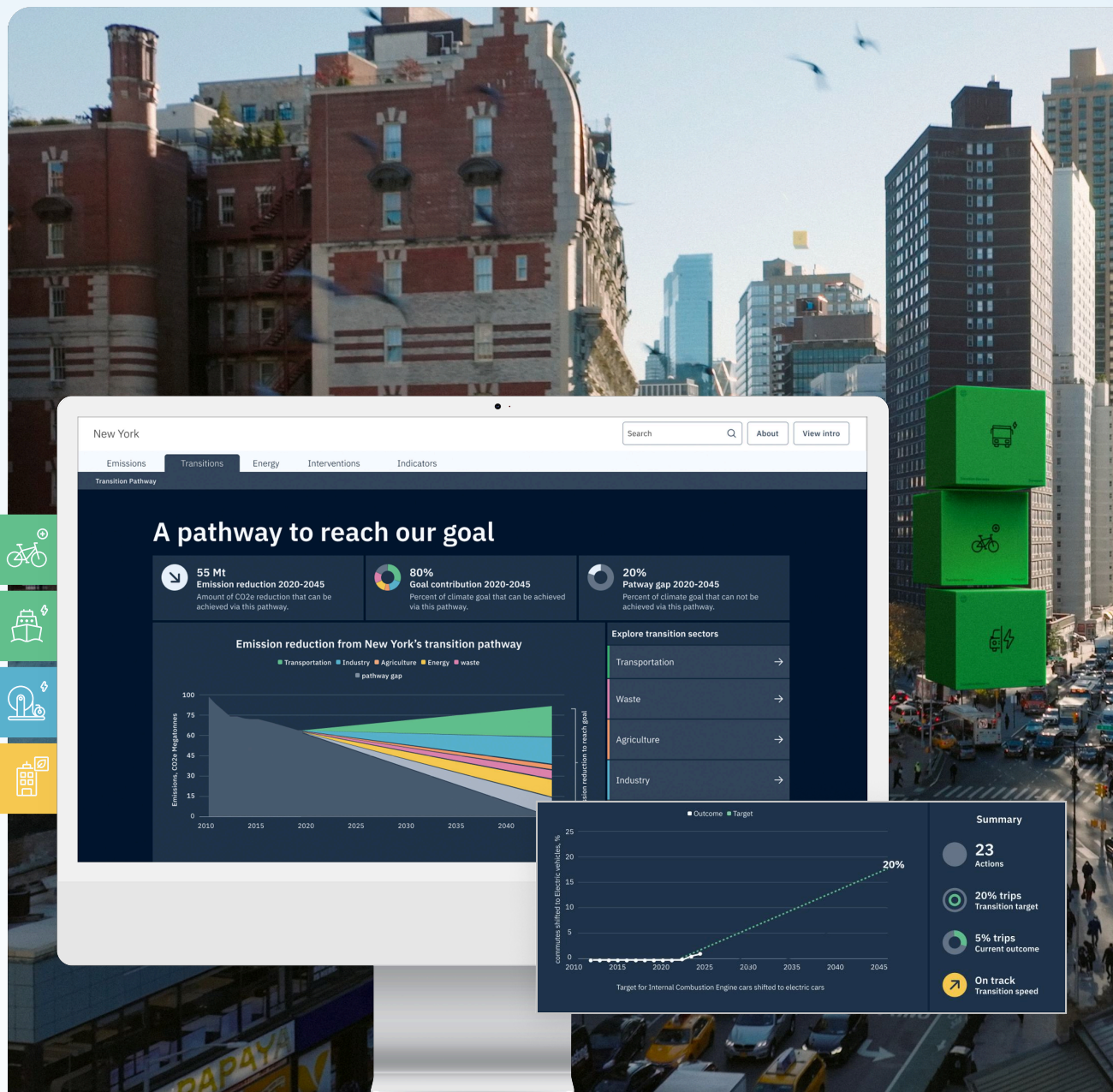
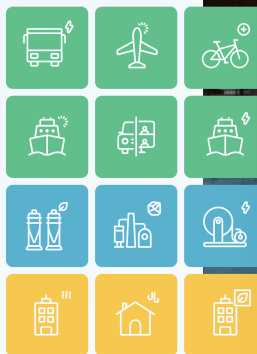


Dashboards Add-On

Gives U.S. jurisdictions an easier way to track progress and communicate climate actions.

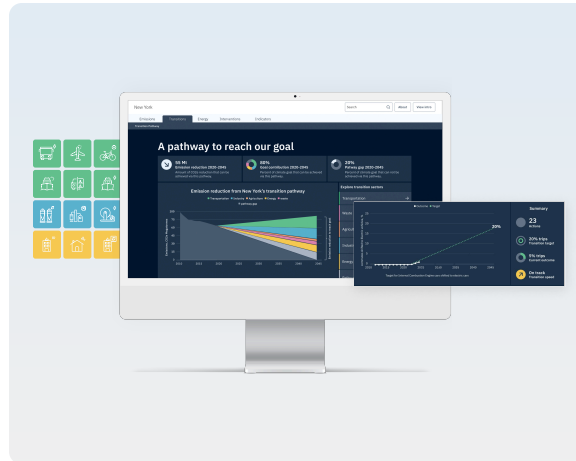


Dashboards Add-On

Description

The Dashboards Add-On is a powerful Add-On that consolidates GHG inventories, transition pathways, policy interventions, and key performance indicators into an interactive, shareable interface. Designed for local governments, it enhances decision-making, transparency, and policy tracking across four key areas.

Features



Emissions Dashboard*

Tracks GHG trends, reduction targets, and emissions sources.

Transitions Dashboard

Monitors sector-specific progress (e.g., EV adoption, renewable energy).

Interventions Dashboard

Displays climate policies, links actions to outcomes, and allows filtering.

Indicators Dashboard

Measures broader success metrics like climate resilience and air quality.

The Emissions Dashboard is included in the Core Modules and thus available to all ClearPath 2.0 license holders.

Value added

Provides a complete picture

Offers a multi-layered view of emissions, policies, and climate progress.

Strengthens accountability & transparency

Makes climate planning accessible for all stakeholders.

Transforms data into action

Helps U.S. jurisdictions move from static reports to real-time, interactive insights.

Enhances grant & funding applications

Supports data-backed climate investment decisions.

Scope of Use

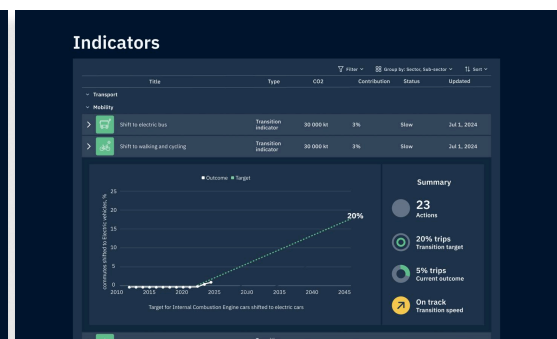
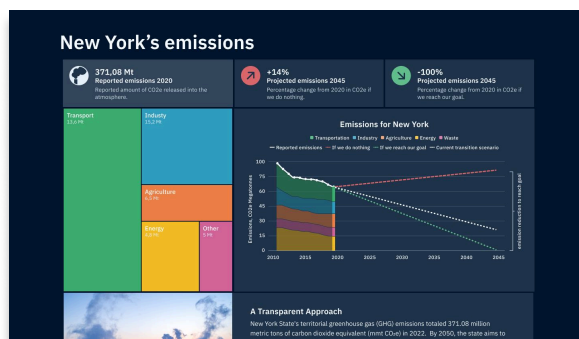
What it does

- Consolidates GHG inventories, transition pathways, interventions, and key indicators into one publishable dashboard.
- Visualizes emissions trends, reduction targets, and sector-specific transition progress.
- Automatically updates as new emissions data and interventions are added.

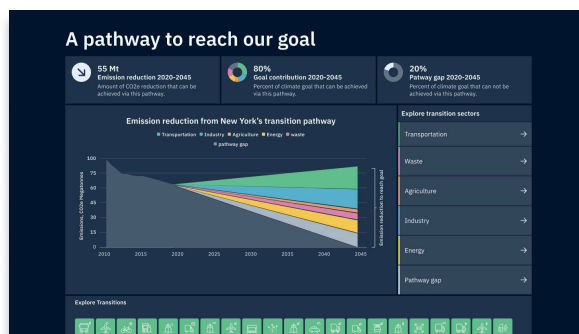
What it doesn't do

- Does not generate real-time emissions data (relies on manual updates).
- Does not provide financial modeling (focuses on tracking & visualization).

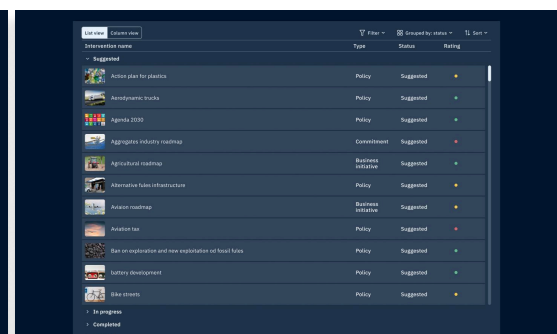
Dashboard overview



Emissions Dashboard



Indicators



Transition Dashboard

Interventions

How the Dashboards Add-On Simplifies the Work

Gives U.S. jurisdictions an easier way to track progress and communicate climate actions.

- **Reduces effort spent on compiling and presenting data**
Automates the collection and visualization of emissions inventories, policy interventions, and key performance indicators in one interactive platform.
- **Improves internal tracking and public transparency**
U.S. jurisdictions can share up-to-date, accessible dashboards with decision-makers, stakeholders, and the public,

avoiding the need for one-off reports or static presentations.

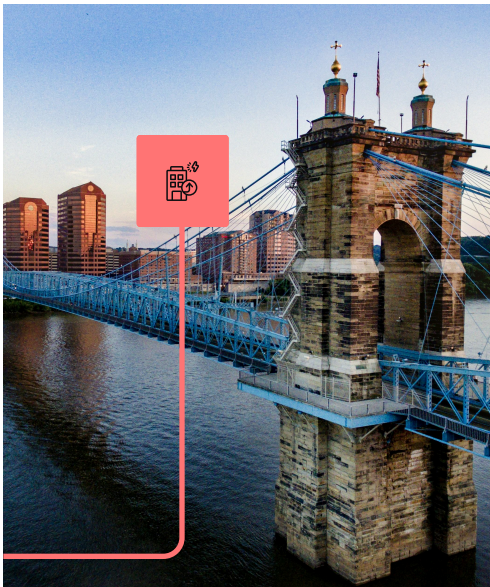
- **Supports better coordination across departments and levels of government**
Helps align local actions with regional and national goals through a single, consistent interface that updates as new data is entered.
- **Avoids the time and cost of building custom dashboards**
Provides a ready-to-use system that reduces reliance on consultants or internal IT teams for development and maintenance.

70% Less Staff and Communication Time Spent on Tracking and Sharing Progress

The Advanced Dashboard automates the tracking, visualization, and communication of climate progress. This reduces time spent compiling data, preparing reports, and updating internal teams, policymakers, and the public.

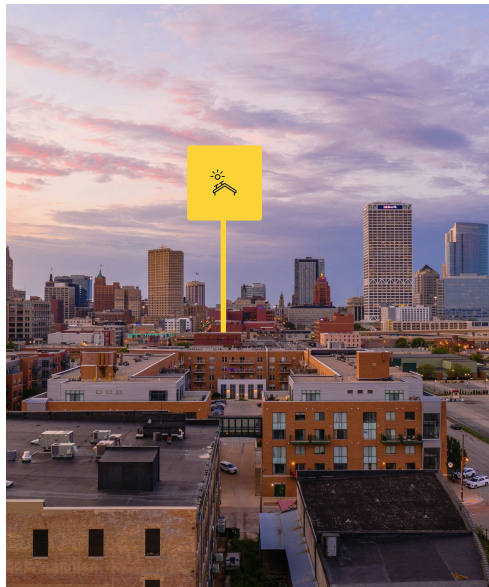
Footnote / Qualifier: Estimate based on typical time savings for U.S. jurisdictions transitioning from manual reporting and stakeholder communication (e.g., static reports, presentations, and cross-department briefings) to interactive dashboards. Actual savings will vary depending on existing processes and engagement strategies.

Use cases for U.S. jurisdictions



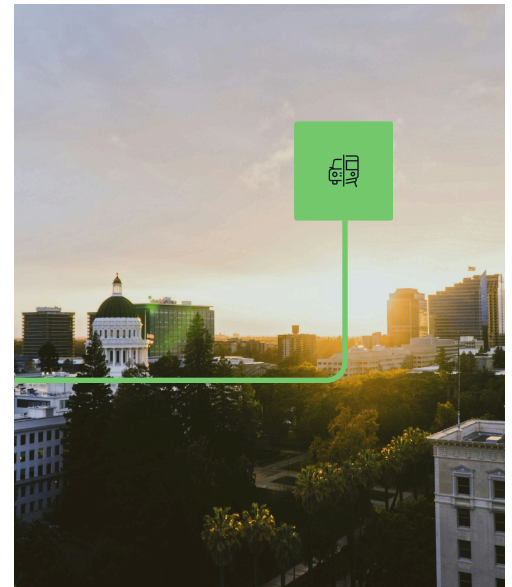
A Mid-Sized City Modeling Electrification

A local government uses the Energy Model to project changes in energy demand resulting from the transition from gas heating to electric sources.



Renewable Energy Planning

In addition to solar, a city wants to track the increasing renewable energy in the regional grid and how its affecting its carbon footprint. This Add-On helps integrate future grid forecasts into its climate plan.



Performance Monitoring – A municipality tracks **climate resilience, energy efficiency, and transportation trends** through the **Indicators Dashboard**.

How to get access

For ICLEI USA members, non-member licensees, or third-party representatives:
[Fill out our form here](#)

For non-members interested in membership or non-member license:
[Contact us](#)

Available to ICLEI USA Members and U.S. jurisdictions under a non-membership ClearPath 2.0 license. The **Dashboards Add-On** is an optional Add-On for ClearPath 2.0.

For more information visit www.icleiusa.org/clearpath-2/ or www.climateview.global