

ICLEI USA Membership Your Benefits

Our Approach

ICLEI USA membership takes a whole-of-government approach that supports climate and sustainability staff, elected leaders, and staff from across departments. The [ICLEI Pathways](#) (Zero Emission, Equitable Development, Resilient, Circular, and Nature-Based) are a framework for designing integrated solutions that balance the patterns of human life and the built and natural environments.

As an ICLEI member, your community has access to the member resources and technical assistance offerings across our five pathways that are outlined in this brochure. These benefits may be leveraged by climate and sustainability staff, elected officials, task force committee members, and staff from all departments. Contact your membership advisor today to learn more about these benefits and how best to put your membership to work.



Cross-Cutting Member Benefits

- Peer exchange and international networking
- 10 hours of direct technical support for your local government covering:
 - Any of the five pathways
 - Climate communications
 - Advocacy and policy development
 - Implementation



Cross-Cutting Member Resources



- Climate and Sustainability Communications Toolkit
- Sustainability Planning Toolkit
- Member-only Capacity Building Cohorts



Zero Emission

Overview of the Zero Emission Pathway

ICLEI supports local governments in the urgent work to rapidly reduce greenhouse gas (GHG) emissions in the next five to 10 years, and to reach zero or negative emissions by mid-century. ICLEI has been a leader in local climate action since the 1990s, developing the frameworks, protocols, and tools that have become the industry standard. We help our members establish a baseline, set goals, and prioritize and implement high-impact actions to most effectively reduce emissions from their communities and their own operations.



Zero Emission Member Benefits

- We offer **Weekly Zero Emission Technical Office Hours** - these are a great place to bring your questions about using the ClearPath Climate Planner, finding data for GHG inventories, forecasting emissions, and modeling emissions reduction actions.
- Consider using 1-2 of your 10 hours of technical assistance for zero emission support. Not sure how to use your zero emission technical assistance? Here are some ideas:
 - **Action Planning and Implementation Conversation:** Our Zero Emission experts can help you identify and prioritize emissions-reduction actions for your community. We can discuss how to get started on implementation of electric vehicle adoption, rooftop solar, energy efficiency, and many more. We can also help you think through how to track progress and monitor results.
 - **Quality Review:** QA/QC of a completed GHG inventory, emissions forecast, emissions reduction scenario in ClearPath, or Climate Action Plan.



Zero Emission Member Resources

- **ClearPath Climate Planner Tool:** The leading online software platform for completing greenhouse gas inventories, forecasts, climate action plans, and monitoring for community-wide or government-operations.
- **ICLEI USA's GHG Inventory Toolkits:** A toolkit that provides what you need to get started establishing a baseline, including data request templates, spreadsheet tools for conditioning data, and step-by-step instructions.
 - Community-Wide toolkit
 - Local Government Operations toolkit
- **ClearPath Forecasting and Planning Webinar Recordings:** Educational videos for communities using ClearPath.
- **Land Emissions And Removals Navigator (LEARN) Tool:** Online tool to calculate carbon emissions and sequestration from forests and trees outside of forests.

Need more support? Consider hiring ICLEI USA to help your community get on a zero- to no-emission pathway—learn more about our services in our Zero Emission fee for service brochure.



Zero Emission



Zero Emission Member Benefits

Other areas to use your technical assistance hours:

- **Basic Community-Wide Emissions-Reduction Forecasting:** For members with a completed 2018 or newer GHG inventory, we will develop a basic business-as-usual forecast, science-based target, and basic high-impact actions.
- **Facilitated Access to Google Environmental Insights Explorer (EIE) Data:** We can download and help you use EIE data for your community on vehicle miles, transit/bicycle/walking trips, residential and non-residential rooftop solar potential, and tree canopy (availability of data types varies by community).



Zero Emission Member Resources

- **The Climate Action Plan Scoping Tool:** A tool that helps set up the process for developing a climate action plan.
- **The Contribution Analysis Toolkit:** A toolkit that helps communities understand changes in GHG emissions over time.
- **High-Impact Action (HIA) Working Paper:** ICLEI USA's analysis of the most effective local actions for deep emissions reductions by 2030.
- **The Race to Zero Policy Matrix:** Matrix that lists and provides examples of high impact emissions reduction policies.
- **Join the conversation!** The ICLEI Community Zero Emission forum is our facilitated discussion group for members to engage with the pathway.



Need more support? Consider hiring ICLEI USA to help your community get on a zero-emission pathway—[learn more about our services in our Zero Emission fee for service brochure.](#)



Resilience

Overview of the Resilient Pathway

Climate change is here. Communities across the US are being confronted with a changed landscape of hazards caused or worsened by climate change, including rising seas, flooding, extreme storms, heat waves, wildfires, and drought. The pressing need to adapt to climate change—to adjust, prepare, cope, and even transform our systems and ways of life—is clear. At ICLEI USA, we help our members adapt to climate change and build community resilience through the Resilient Development Pathway. Resilient Development technical advisors can help your community understand local climate change projections, kickstart climate risk and vulnerability assessments, engage staff and the community through workshops and surveys, and strategize for implementation.



Resilient Member Benefits

Consider using 1-2 hours of your 10 hrs of technical assistance for resilience support. Not sure how to use your resilience technical assistance? Here are some ideas:

- **Resilience Kickstart Call** (30 min): Connect with the resilient development pathway lead to jumpstart any resilience planning process (Hazard Mitigation Plan, vulnerability assessment, adaptation plan, climate action and resilience plan etc) by talking through project planning and management, brainstorming around stakeholder engagement, and learning about the latest tools and resources in the resilience space (schedule a call with [our Senior Resilience Officer](#)).

Resilient Member Resources



- **Vulnerability Assessment Toolkit**: ICLEI USA's one-stop-shop for climate risk and vulnerability assessments, the Vulnerability Assessment Toolkit includes template staff and community engagement materials (facilitator guides, activity descriptions, slide deck, survey) and a guided assessment report template.
- **Adaptation First Steps Guide**: (Sustainable Communities Suite): A step-by-step guide for communities getting started with their climate adaptation journey.
- **ResiliencePlus Strategies Matrix**: An array of resilience strategies covering a variety of climate change hazards and community systems (for example, strategies for adaptive governance, planning, ecosystem-based adaptation, and more).
- **Cost of Doing Nothing toolkit**: A guide and toolkit for building a local business case for climate change adaptation.
- **Join the conversation!** [The ICLEI Community Resilience and Adaptation forum](#) is our facilitated discussion group for members to engage with the pathway.

Need more support? Consider hiring [ICLEI USA](#) to support your community's climate risk and vulnerability assessment and adaptation planning efforts—learn more about our services in our [Climate Change Adaptation and Community Resilience fee for service brochure](#).



Circular

Overview of the Circular Pathway

The global economy consumes 100 billion tons of material annually to provide shelter, food, clothing, transportation, energy, and water to the 8 billion people living on our planet. This rate has more than doubled since 1990 and is projected to reach 190 billion tons by 2060. With fast-paced growth in consumption comes the degradation of natural resources and increasing greenhouse gas emissions, with an estimated 70% of global emissions tied to material handling and use. Through the development of the circular economy, and with help from ICLEI USA's Circular Pathway, communities can redistribute resources to drive smart and equitable consumption, resilience, climate action, and biodiversity conservation while offering the tools to support social equity, local job creation, public health, and community wealth.



Circular Member Benefits

Consider using 1-2 of your 10 hours of technical assistance for circular support. Not sure how to use your circular technical assistance? Here are some ideas:

- **Circular Kickstart Call (30 min):** Connect with the circular development pathway leads to jumpstart any circular economy development process by talking through project planning and management, brainstorming around stakeholder engagement, and learning about the latest tools and resources in the circular economy space.
- **Sustainable Procurement Policy Review:** Do you need support completing your sustainable procurement policy? ICLEI USA's Circular Pathway team can review your draft policy and provide feedback and recommendations based on the following: an evaluation of your policy against ICLEI USA's sustainable public procurement best practices; a review of your policy against ICLEI USA's circular economy criteria to strengthen your policy and support your local economy; an assessment of the implementation and monitoring plan within the policy with recommendations to ensure successful outcomes.

Circular Member Resources



- **Circular City Actions Framework:** A framework that unpacks what the circular economy concept means at the local level, to help cities on their circular journeys.
- **City Practitioners Handbook: Circular Food Systems:** This handbook provides local governments with concrete tools their peers are using to facilitate the transition to circular food systems, from stakeholder engagement to designing effective policies.
- **ICLEI's City Toolkit: Just Transition in the Built Environment:** This resource outlines six key tools that local governments can leverage to achieve these goals. For each tool, it provides policy recommendations and practical examples from around the world.
- **Urban Transitions Handbook:** The methodology and tools presented in this guidebook can be applied by local governments to a variety of sustainability programs, including those that advance the transition to the circular economy.
- **Quick Glance at Sustainable Public Procurement:** This resource provides high-level guidance on the steps a local government can take to adopt a comprehensive sustainable public procurement policy.



Circular



Circular Member Benefits

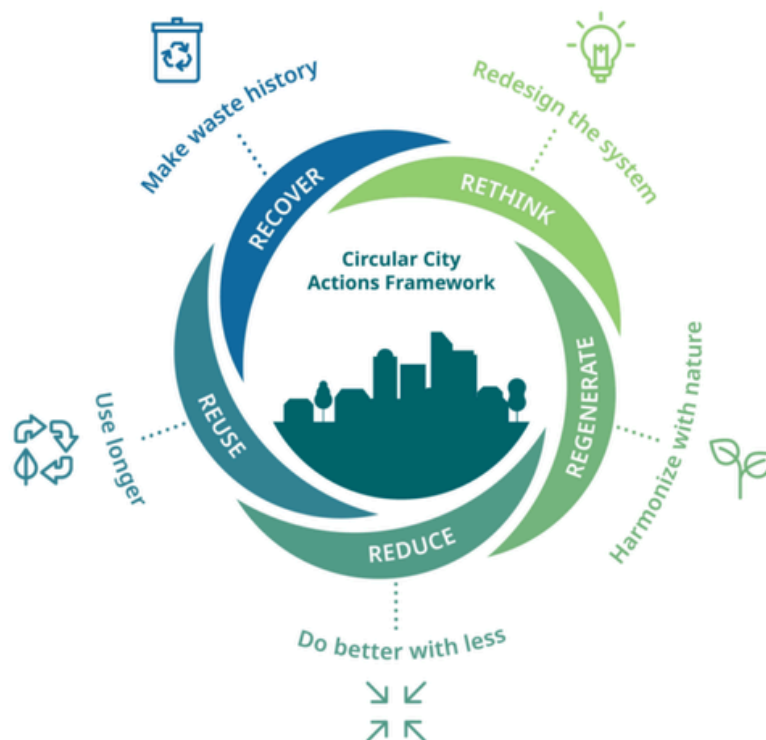
Other areas where we've helped our members:

- Reviewing materials for stakeholder/community engagement (your slide decks, facilitator guides, and activities) and draft plans
- Sharing exemplary plans/materials/toolkits/policies created by other local governments & making introductions to others doing similar work
- Troubleshooting issues related to lack of data availability, siloed processes/interdepartmental collaboration
- Strategizing for effective monitoring and evaluation of circularity; and more!



Circular Member Resources

- **The Circular Pathway Starter Pack:** This starter pack includes ICLEI USA's Circular Resource Guide for Local Governments, Circular Strategies Matrix, and Circularity 101 Presentation Template
- **Join the conversation!** The ICLEI Community Circularity forum is our facilitated discussion group for members to engage with the pathway.



Need more support? Consider hiring ICLEI USA to support your community apply the best practices for circular economy and sustainable and innovative procurement.—learn more about our services in our [Circular fee for service brochure](#).



Nature

Overview of the Nature Pathway

Alongside the climate change crisis, communities are also struggling with the loss of natural habitat and challenges around providing access for all to nature's beauty and benefits — including the many ecosystem services to humans, such as clean water, clean air, healthy food and medicines, carbon sequestration, environmental hazard protection and much more. Recognizing the urgency of this biodiversity loss — and building on ICLEI's unique role as the United Nations focal point organization on cities and nature — ICLEI USA can help your community develop a plan that conserves natural areas, improves biodiversity, and provides equitable access to nature.



Nature Member Benefits

Consider using 1-2 hours of your 10 hours of technical assistance for nature support. Not sure how to use your nature technical assistance?

Here are some ideas:

- **Nature Kickstart Call (30 min):** Connect with the Nature Pathway Leads to discuss the following topics - Integrating Nature into a Sustainability plan or CAP, LEARN tool, CitiesWithNature, or a FFS Scoping call
- Other areas where we've helped our members:
 - Reviewing nature/biodiversity elements in Sustainability/Climate Plans
 - Reviewing LEARN Tool reports or Deming the LEARN tool
 - Providing a resource overview.
 - Hosting a Nature Cohort to support nature integration into a Sustainability Plan or Climate Action Plan

Nature Member Resources



- **CitiesWithNature (CWN)** and **RegionsWithNature (RWN)** Platforms: Global platforms with resources to strengthen collective action to mainstream nature into cities and regions. The CWN and RWN platforms provide communities with direct ties to the Convention on Biological Diversity (CBD).
- **Berlin Urban Nature Pact**: An initiative that supplies communities with nature and biodiversity targets they can adopt and incorporate into a climate and/or sustainability plan.
- **Cities Biodiversity Index Tool**: The Cities Biodiversity Tool located in the CitiesWithNature Platform supports local governments in developing their own Cities Biodiversity Index to assess the state of nature and biodiversity in their boundary.
- **Land Emissions And Removals Navigator (LEARN) Tool**: Online tool to calculate carbon emissions and sequestration from forests and trees outside of forests.
- **Nature Based Solutions Matrix**: Matrix of nature based solutions local governments can incorporate into their climate and/or sustainability plans.

Need more support? Consider hiring ICLEI USA to support your community's nature-based solutions—learn more about our services in our [Nature fee for service brochure](#).



Nature



Nature Member Resources



- **Nature Planning Guidebook**: Guidance document to support local governments with developing a Local Biodiversity Strategy and Action Plan for their community.
- **Guide to Biodiversity Financing for Cities and Regions**: Guidance document that discusses the financial instruments needed to implement biodiversity strategies and actions.
- **Join the conversation!** The ICLEI Community Nature forum is our facilitated discussion group for members to engage with the pathway.

Need more support? Consider hiring ICLEI USA to support your community's nature-based solutions—learn more about our services in our [Nature fee for service brochure](#).



Equitable Development

Overview of the Equitable Development Pathway

ICLEI USA offers members crucial support in navigating the challenges of climate change and fostering sustainable urban planning. With a central focus on equity, we assist local governments in prioritizing inclusivity and addressing climate-related disparities. Our organization goes beyond emission reduction by advocating for the creation of just, livable, and inclusive communities to tackle the root causes of injustice. Together, we strive to build resilient communities where every voice is heard and cultural diversity is integral to the social fabric, ensuring a sustainable future that safeguards human health and the natural environment.



Equity Member Benefits



Equity Member Resources

- ICLEI USA's **Equity: First Step Guide**: Introduces local governments to equity by helping them identify and track inequities that occur within their community. The guide provides local governments with a starting point for tracking inequities in five distinct categories. These categories include: Energy Access, Public Health, Infrastructure, Economic Prosperity, and Education.
 - At a minimum, these are the areas in which communities must analyze inequities.
- ICLEI USA's **Equity in Climate Planning Trends and Best Practices for Local Governments**: This report builds on the Equity: First Steps Guide and provides communities with examples of equity in climate action plans, community engagement strategies, data and metrics for tracking equity and core actions for incorporating equity.
- Learn from The Urban Transitions Alliance, ICLEI's network of industrial-legacy cities, including Buffalo, Pittsburgh, and Cincinnati, in an **equity-centered webinar series**.
- **Join the conversation!** The **ICLEI Community Equity** "forum" is our facilitated discussion



Communications Support

Overview of Communications Support

Dedicated to crafting compelling narratives, the Communications Department at ICLEI USA provides essential assistance to our members, guiding them in effectively presenting their sustainability and climate change initiatives to engage their community members. Our goal goes beyond mere visibility; it's a collective effort to emphasize the importance of taking climate actions holistically. Through dynamic storytelling and place-based strategies, we aim to ignite enthusiasm and foster collaboration to build stronger communities.



Communications Member Benefits

Consider using 2-3 hours of your 10 hours of technical assistance for nature support. Not sure how to use your communication technical assistance? Here are some ideas:

- **Communications Strategy Call (1 hour):** Meet with ICLEI USA Communications Officer to discuss your community's communications strategy, brainstorm goals, and create an action plan. All calls are followed up with detailed notes, next steps, and resources.
- **Climate and Sustainability Communications Workshop (1 - 2 hours):** Schedule an interactive workshop for your communications team or interested staff. The 60-minute workshop will cover key climate and sustainability communications items and brainstorm ideas for your community.
- **External Communication Channel Audit Request (2-3 hours):** Meet with ICLEI USA Communications Officer to request an external communication channel audit. The communications officer will then review and provide feedback to increase public engagement.

Communications Member Resources



- **ICLEI USA's Climate & Sustainability Communications Toolkit:** This toolkit provides all the necessary tools and guidance to promote effective messaging and delivery techniques within climate and sustainability communications for local governments.





Advocacy, Policy and Leadership Opportunities

Overview of Advocacy, Policy and Leadership Opportunities

Dedicated to crafting compelling narratives, the Communications Department at ICLEI USA provides essential assistance to our members, guiding them in effectively presenting their sustainability and climate change initiatives to engage their community members. Our goal goes beyond mere visibility; it's a collective effort to emphasize the importance of taking climate actions holistically. Through dynamic storytelling and place-based strategies, we aim to ignite enthusiasm and foster collaboration to build stronger communities.



Leadership Opportunities

- **Join the Cities Race to Zero or Cities Race to Resilience.** Become an internationally recognized climate champion and gain access to our technical support packages that put you on track by 2030 for 2050 carbon-neutrality and resilience.
- **Join CitiesWithNature.** Champion nature, biodiversity, and ecosystem services while unlocking technical support for nature-based solutions in your community.
- **Join CityFood.** ICLEI's global flagship program aims to accelerate local and regional government action toward sustainable food systems transformation.
- **Serve with (or Inform) ICLEI Governance.** Every three years, parallel regional elections take place in all 9 ICLEI regions to elect the ICLEI Global and Regional Executive Committees. Representatives from eligible ICLEI Members can apply in their region by submitting an application, and all eligible ICLEI Members then vote, which is then followed by the ICLEI Global Executive Committee elections.
- **Be part of ICLEI's Delegation to the UN Climate Conference and other events.** ICLEI leaders share their community's story by attending United Nations' international conferences on climate (annually around November/December) and nature (every 2 years), offering a unique chance for elected leaders to take the global stage.

Advocacy Member Resources



- **High-Impact Advocacy (HIA) Policy Matrix (Coming 2024):** From declaring a climate emergency to building just, equitable communities, we outline the highest-impact policies that local leaders can adopt for transformative change.
- **Cities Race to Zero and Race to Resilience Resources:** Set a science-based target and reach carbon-neutrality by 2050 and ensure the resilience is embedded into city or town processes with our technical support packages for both rapid decarbonization and climate adaptation.
- **Cities Forward Academy (2025):** This 6-month, sequential leadership-and-learning virtual series will share lessons from two years of Cities Forward, the U.S. State Department's flagship resilience-building initiative.
- **Budgeting for Climate Action and Sustainable Public Procurement Support:** Tap ICLEI expertise for municipal finance that meets climate and sustainability aims.

ABOUT ICLEI USA

ICLEI is the first and largest global network of local and regional governments devoted to solving the world's most intractable sustainability challenges. ICLEI USA's standards, tools, and programs credibly, transparently, and robustly reduce greenhouse gas emissions, improve lives and livelihoods and protect natural resources in the U.S. communities we serve. Through a data-driven approach and focus on just and equitable communities, ICLEI USA and our network partners are working to keep 1.5 °C alive.

MEMBER DUES

| Population Size | Annual Dues |
|-----------------|-------------|
| < 50k | \$1,800 |
| 50k - 100k | \$2,200 |
| 100k - 200k | \$3,200 |
| 200k - 300k | \$3,500 |
| 300k - 500k | \$4,000 |
| 500k - 750k | \$5,000 |
| 750k - 1M | \$6,500 |
| 1M - 2M | \$7,500 |
| 2M - 3M | \$9,500 |
| > 4M | \$10,000 |



This work is licensed under a [Creative Commons Attribution-NonCommercial-NoDerivatives 4.0 International License](https://creativecommons.org/licenses/by-nc-nd/4.0/). It may not be used for any commercial purpose. Any non-commercial use of this material must provide attribution to ICLEI Local Governments for Sustainability USA.

ICLEI USA's Fee for Services

Fee-based opportunities to help your community reduce emissions, improve the circular economy, build resilience, advance nature-based solutions, and more.



ICLEI USA delivers high-quality products that build local government capacity and ensure long-term success. Unlike a traditional consultant, our work does not end when the final deliverables are submitted. We continue to support member communities and celebrate your successes so that others can follow your lead.

Table of Contents

| | |
|---|-----------|
| Decarbonization Services | 03 |
| Getting to Zero Emission | 04 |
| Greenhouse Gas Inventories | 05 |
| Wedge Analysis | 06 |
| Climate Action Plans | 07 |
| Consulting Hours | 08 |
| Adaptation & Resilience Services | 09 |
| Integrated Climate Action Services | 10 |
| Vulnerability Assessments and Adaptation Plans | 11 |
| Custom Workshops | 14 |
| Consulting Hours | 15 |
| Nature-Based Services | 16 |
| Integrating Nature into Your Community's Initiatives | 17 |
| Cities Biodiversity Index | 18 |
| Mapping Biodiversity and Nature | 21 |
| Appendix J: Forest + Trees Outside of Forests Analysis | 22 |
| Circular Services | 23 |
| Circular Economy and Sustainable and Innovative Procurement | 24 |
| Equity-Building Services | 26 |
| Getting Started With Equity | 27 |



Decarbonization Services



Fee-based opportunities to help your community get on a zero emission pathway.



Zero Emissions



For more than 30 years, ICLEI USA's greenhouse gas (GHG) emissions frameworks, standards, tools, and reporting platforms have allowed thousands of local governments to advance data-driven emissions management practices and to measurably reduce energy use and carbon pollution.

Highlights include:

- 1995: ICLEI launches Cities for Climate Protection (CCP) in the U.S., the world's first and largest program supporting cities in climate action planning.
- 2009: More than 500 local governments become ICLEI members, utilizing resources for pursuing emissions targets committed under the Mayors Climate Protection Agreement.
- 2012: ICLEI USA's U.S. Community Protocol is released after a three-year stakeholder process, establishing what is now the most widely used data-driven framework for local emissions accounting and reporting nationwide.
- 2013: ICLEI USA's ClearPath Climate Planner Tool software platform is launched.
- 2018: Launch of guidance to account for forest and tree greenhouse gas emissions and removal of carbon from the atmosphere, with U.S. Community Protocol Appendix J.
- 2020: Land Emissions And Removals Navigator (LEARN) tool is launched to allow communities to easily calculate their forest and tree emissions and removals in accordance with Appendix J.



"ICLEI - Local Governments for Sustainability is the oldest and most effective nonprofit working on climate issues with local governments. They are the leading group that helps local governments create a baseline greenhouse gas {GHG} inventory, which becomes the road map for reducing GHG emissions. They also are one of the most active groups assisting local governments to develop and implement climate action plans, making communities more resilient. And they do this work at a surprisingly low cost. They are my 'go to' group for everything climate-related."

- Brigid Shea, Travis County Commissioner, Precinct 2

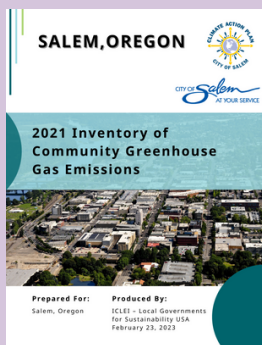


Greenhouse Gas Inventories

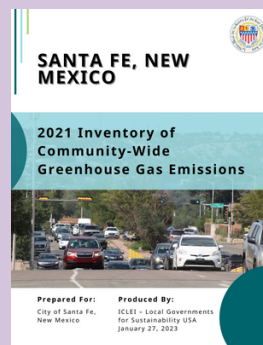
Inventoried sources of greenhouse gas (GHG) emissions and related activities is the first step toward taking action on climate change. A GHG inventory provides an evidence base to set and act on community climate goals and, importantly, to measure the progress of mitigation actions over time. To ensure that GHG inventories are transparent, consistent, and defensible, ICLEI USA developed the GHG accounting protocols that are the standard protocols used by local and regional government agencies across the globe.

To support the application of the protocols, ICLEI USA developed and maintains an online suite of emissions management tools packaged together within the ClearPath Climate Planning Tool. ICLEI USA staff will prepare data requests, work with community staff to retrieve data, review and condition data, complete the inventory using ICLEI's ClearPath Climate Planning Tool, and prepare a written report of results. Inventories can be conducted according to the Local Government Operations Protocol, *U.S. Community Protocol*, the Global Protocol for Community-Scale emissions (GPC) Basic Protocol, or GPC Basic Plus Protocol.

Our Work



Salem, OR, 2021 Community-Wide Greenhouse Gas Emissions Inventory



Santa Fe, NM, 2021 Community-Wide Greenhouse Gas Emissions Inventory

Services & Costs

The rates listed are ICLEI USA member-preferred pricing. Non-members can fill out the request for a [quote form](#) to receive pricing information.

Community-Wide GHG Inventory and Narrative Report of Results | \$9,000

The base price is for a typical inventory; ICLEI will quote additional time for inventories that include ports, airports, multiple utilities or other non-typical emissions sources or sectors.

Local Government Operations GHG Inventory and Narrative Report of Results | \$9,000

24/7 hour electricity emissions analysis (add-on to community GHGI) | \$2,500

Will produce charts of electricity emissions by season and time of day.

Annual Comparison (per year added) | \$2,200

ICLEI USA will include previous years' GHG Inventories in the written report and provide comparison tables and discussion of changes year-over-year.

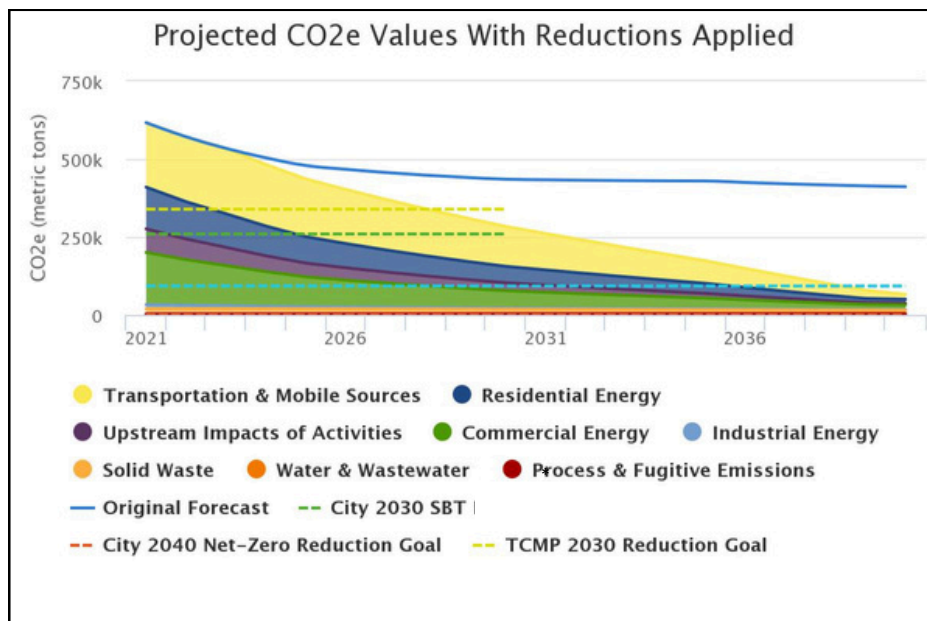


Wedge Analysis

Building on a completed GHG inventory, ICLEI USA will work with government staff and stakeholders to develop a “wedge analysis” to develop pathways to inform community climate mitigation strategies. ICLEI USA will model, evaluate, and create city or county-specific scenarios for up to five short-, mid-, and long-term policies (15 total) for the consideration of internal and external stakeholders. These will be scenarios, such as “electrify 10% of buildings each year,” rather than specific actions.

The Wedge Analysis includes a summary of overall and sector-specific emissions projections for the near-term (e.g., 2030-2035) and long-term (e.g., 2050). Deliverables:

- Measure identification and prioritization
- Target-setting memo
- Matrix of community-wide GHG mitigation measures (short-term; mid-term; long-term) prioritized actions in each: control, collaborate, and advocate
- Summary of baseline conditions and projected reductions.
- Presentation materials
- Virtual meeting attendance



An example of a wedge analysis showing aggressive emissions reduction scenario.

Services & Costs

Wedge Analysis | [Contact us for a quote](#)



Climate Action Plans

From a baseline inventory of GHG emissions, forecasted emissions, and high-impact actions identified, the final element of emissions management is the development of a mitigation-focused climate action plan (CAP).

The ICLEI USA team will review existing documents related to any existing CAPs, general planning, and GHG inventories. These documents will be reviewed with an eye toward consistency with the existing ClearPath documentation and a focus on the ability of ClearPath to model predicted emissions reductions of measures as they are described in other documents. Any gaps in existing capabilities for modeling these actions will be identified.

Local government staff should work collaboratively with the community to identify targeted, effective strategies to achieve the community's GHG reduction goals while applying principles of equity, inclusive engagement, and recognition of changing climate conditions.

ICLEI will provide modeling and analysis in ClearPath and incorporate stakeholder input to identify possibilities for reducing GHG emissions. The CAP will serve as an immediate-, mid-, and long-term planning resource and roadmap for developing implementation strategies for each recommended action, which will require ongoing stakeholder input and support.

To achieve significant GHG reductions while incorporating other relevant planning goals, GHG reduction measures may include both measures that reduce GHG emissions and/or measures that enhance carbon sinks with nature-based solutions.

Our Work



Jersey City, NJ, [2021 Climate and Energy Action Plan](#)



Santa Fe County, NM, [2023 Community Greenhouse Gas Climate Action Plan](#)

Services & Costs

Climate Action Plan | [*Contact us for a quote*](#)



Consulting Hours

Expand your capacity to complete climate mitigation actions by engaging ICLEI's team of technical experts. Our consulting packages provide flexibility to access ICLEI's guidance when and how you need it.

With our consulting hours packages, we can:

- Design and implement a customized GHG analysis workshop
- Review and provide feedback on climate data and analysis
- Review and provide feedback on drafts of deliverables, including plans, presentations, and surveys
- Complete a Contribution Analysis to better understand the drivers of change
- Detailed quality assurance review of records, calculations, and assumptions used to develop ClearPath GHG inventory
- Customize your package



Services & Costs

The rates listed are ICLEI USA member-preferred pricing. Non-members can fill out the request for a [quote form](#) to receive pricing information.

5-Hour Package | \$775

10-Hour Package | \$1,550

20-Hour Package | \$3,100



Adaptation & Resilience Services



Fee-based opportunities to help local governments assess climate vulnerability, adapt to impacts, and build resilient communities.





Integrated Climate Action Services

Climate change is not a distant crisis but an unfolding challenge with impacts felt here and now. Recognizing the growing need for preparedness alongside decarbonization, we want to help your community develop a Climate Action Plan that addresses both climate mitigation (assessing and reducing greenhouse gas emissions) and adaptation (assessing and reducing vulnerability to climate change impacts in ways that foster community resilience). If your community has already developed a mitigation-focused climate action plan, we can help incorporate adaptation into the plan update.

What are the benefits of an integrated Climate Action Plan?

First, consolidating adaptation and mitigation planning processes into one will save resources and time. In particular, community engagement is very resource consumptive, so it is more efficient to consolidate topics as opposed to doing separate outreach processes. It is also likely that more departments and stakeholders will be involved in a process that achieves multiple goals, which fosters greater sharing of knowledge and resources.

Additionally, integrating both adaptation and mitigation facilitates the identification of “synergistic” measures, i.e. those that address both mitigation and adaptation simultaneously to maximize benefits of implementation. Lastly, integrating these two processes ensures that the community does not adopt any emission reduction strategies that are counterproductive to adaptation, and vice versa.

Services & Costs

Integrated Climate Action Plan | *Contact us for a quote*

A team of ICLEI USA technical experts will work together to create an integrated Climate Action Plan that includes a vulnerability assessment and adaptation strategies, in addition to a greenhouse gas inventory and emissions reduction strategies.

Incorporating Adaptation Into Mitigation-Focused Plan | *Contact us for a quote*

ICLEI USA technical experts create a more basic adaptation component to incorporate into a mitigation-focused CAP that already exists or that ICLEI has been contracted to lead.



Vulnerability Assessments and Adaptation Plans



ICLEI USA can assist your community in conducting a climate risk and vulnerability assessment (CRVA) as part of a greater climate adaptation/action planning process, or as a standalone effort. We offer multiple options for levels of service and a flexible approach that can be customized to your community's needs and resources.

Services & Costs

The rates listed are ICLEI USA member-preferred pricing. Non-members can fill out the request for a [quote form](#) to receive pricing information.

Basic Support

Climate Conditions Report | \$6,200

ICLEI USA technical staff identify the top climate hazards that impact your community now and in the future, describe how these hazards are expected to change, and interpret the latest research and climate projections for your area. The Climate Conditions Report can serve as the foundation for a more in-depth assessment of community vulnerability or an adaptation plan, or be incorporated into a CAP draft or update.

Climate Risk and Vulnerability Assessment Foundations Memo | \$9,000

ICLEI USA completes preliminary desk research that serves as the foundation of a community-led Climate Risk and Vulnerability Assessment. Our technical experts start by researching present and future climate conditions to help communities understand their climate risk. We also provide a list of suggested community systems and assets, public services, and sectors that may be more vulnerable to the impacts of climate change. This package lays the foundation for a more in-depth assessment of vulnerability and community engagement. This offer can be customized to align with the requirements of the Global Covenant of Mayors (GCoM) for an additional \$875 fee.

Gap Analysis | \$5,000 - \$15,000*

ICLEI USA can identify and help you fill in gaps in your community's climate adaptation planning. For example, if your community is covered by a regional vulnerability assessment, our technical experts can help you expand and contextualize the results to reflect your community's context.

*Hours estimated as these projects are highly context-specific.

Climate Risk Map Report | \$10,000*

ICLEI USA technical staff will use spatial data to conduct a desktop analysis of climate hazard risk in your community. This report includes custom maps showing hazard exposure, social vulnerability, and community assets to help you understand which neighborhoods, populations, and infrastructure are most vulnerable to climate hazards. You can use this report as a foundation for further risk and vulnerability analyses or to prioritize areas for climate action.

*Fee variable based on the level of effort/depth of work requested.



Services & Costs - Vulnerability Assessments and Adaptation Plans

The rates listed are ICLEI USA member-preferred pricing. Non-members can fill out the request for a [quote form](#) to receive pricing information.

Advanced Support

Climate Risk and Vulnerability Assessment (CRVA) | *Contact us for a quote**

ICLEI USA technical staff assist your community in completing a climate risk and vulnerability assessment. The CRVA is an essential element of community resilience and preparedness. A CRVA will illuminate your community's exposure, risks and capacity to adapt to climate change impacts. This offer includes regular client check-ins, analysis of climate data, workshop support, and writing the final report. *Fee varies based on number of stakeholder workshops and ICLEI's role in public engagement.

Climate Adaptation Plan | *Contact us for a quote**

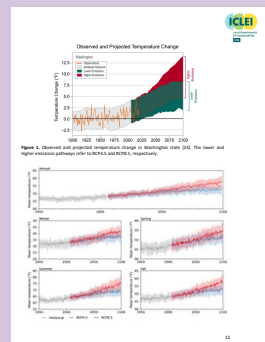
ICLEI USA can assist your community with developing a standalone Climate Adaptation Plan, if an integrated CAP is not desired or feasible. A Climate Adaptation Plan includes a climate vulnerability assessment and an adaptation strategy.

*Fee variable based on the level of effort/depth of work requested.

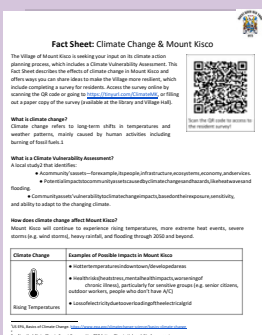
Our Work



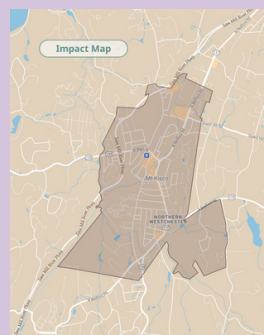
Mount Kisco, NY, Survey Flier



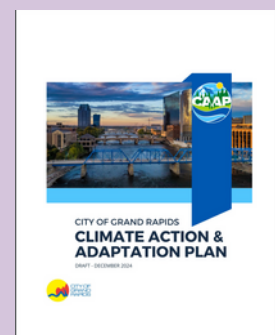
Olympia, WA, Climate Conditions Report



Fact Sheet: Climate Change & Mount Kisco, NY



Mount Kisco, NY, Community Engagement Boards



Grand Rapids, MI Climate Action and Adaptation Plan



VULNERABILITY ASSESSMENTS AND ADAPTATION PLANS OFFERINGS COMPARISON

X Standard element of the offering

O Not standard to the offering but can be included for an additional fee

| | Climate Conditions Report | Climate Risk Map Report | CRVA Foundations Memo | CRVA | Adaptation Plan | ICAP |
|--|---------------------------|-------------------------|-----------------------|------|-----------------|------|
| Climate data and projections | X | X | X | X | X | X |
| ICLEI writes memo or report document (Google Docs) | X | X | X | X | X | X |
| Custom Canva design | O | O | O | O | O | O |
| Mapped climate hazards (GIS) | | X | O | O | O | O |
| Existing plan review | | | X | O | X | X |
| List of vulnerable systems and assets (based on desk research) | | | X | | | |
| Materials and support with internal stakeholder engagement (e.g. workshop design, facilitation) to assess vulnerability and risk | | | | X | X | X |
| Materials and support with public/community engagement (e.g. workshop design, facilitation) | | | | O | O | O |
| List of suggested adaptation strategies | | | | | X | X |
| Materials and support with internal stakeholder engagement (e.g. workshop design, facilitation) to identify and select adaptation strategies | | | | | X | X |
| Support with implementation matrices and planning | | | | | X | X |
| Project design and deliverables include GHG mitigation | | | | | | X |



Custom Workshops

ICLEI USA's experienced team offers in person and online workshops on many aspects of climate planning and implementation.

Potential topics include:

- Results of a climate risk and vulnerability assessment or greenhouse gas inventory
- Basics of climate adaptation planning and integrated Climate Action Plans
- Facilitating the action identification and prioritization process for a Climate Action or Adaptation Plan
- Community visioning, target setting, and equitable engagement

This list is not comprehensive. Let us know your audience (staff, partners, the public) and goals (education, knowledge generation, facilitated decision-making) are and we will be in touch.



"[ICLEI's] workshop opened our eyes to how important stakeholder ownership is for achieving engagement in climate resiliency activities within our city government. It helped us address the paralysis caused from the perceived enormity of mitigation actions; we now recognize that the steps we can take will not be as hard as people imagine, and will ultimately save money. Over the next 12 to 18 months, we are planning to use the ICLEI workshop as a catalyst for additional dialogue-inducing workshops."

- Jeremy Pathmanabhan, Program Manager Climate Change, City of Los Angeles CA

Services & Costs

The rates listed are ICLEI USA member-preferred pricing. Non-members can fill out the request for a [quote form](#) to receive pricing information.

Virtual Webinar | \$500*

A customized, 1-2 hour virtual webinar including a Q&A session with ICLEI technical experts on a topic related to climate change adaptation.

Virtual Workshop | \$2,000*

An interactive, half-day workshop with ICLEI technical experts on a topic related to climate change adaptation.

In-Person Workshop | \$30,000*

A two-day, in-person interactive workshop that may address multiple topics (e.g. climate adaptation and mitigation). Includes a report of workshop outcomes and recommendations.

*Fee may vary based on the scope and level of effort required.



Consulting Hours

Have ICLEI's team of resilience technical experts on call during your climate adaptation process. Our consulting hours packages give you the flexibility to ask for ICLEI's guidance when and how you need it.

With our consulting hours packages, we can:

- Help map out a customized vulnerability assessment or adaptation planning process that meets your community's needs
- Co-develop community and stakeholder engagement plans for climate adaptation projects
- Help design activities to engage different groups of stakeholders and train facilitators
- Review and provide feedback on climate data and analysis
- Review and provide feedback on drafts of deliverables, including plans, presentations, and surveys



"Every community should undertake a climate vulnerability assessment and we feel privileged to have ICLEI's support as we launch ours. The assessment will help us plan for changing future conditions. It will also help us make investments now that will ensure the resiliency of our community after we are long gone. Climate adaptation is not a choice—it is a duty!"
- **Honorable Mayor Nicola Armacost, Village of Hastings-on-Hudson, NY**

Services & Costs

The rates listed are ICLEI USA member-preferred pricing. Non-members can fill out the request for a [quote form](#) to receive pricing information.

5-Hour Package | \$775

10-Hour Package | \$1,550

20-Hour Package | \$3,100



Nature-Based Services



Fee-based opportunities to help your community advance nature-based solutions, enhance biodiversity, and connect people to nature's benefits.



Integrating Nature into Your Community's Initiatives

Alongside the climate change crisis, communities are grappling with the biodiversity crisis. The loss of natural habitat, the challenges providing equitable access to nature and the ecosystem services to humans — **such as clean water, clean air, healthy food and medicines, carbon sequestration, environmental hazard protection** and much more — contribute heavily to the climate crisis.

Recognizing the urgency of this biodiversity loss — and building on **ICLEI's unique role as the United Nations focal point organization on cities and nature** — we want to help your community develop a plan that addresses nature conservation and biodiversity.

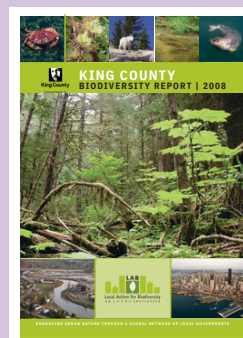
We support communities to:

- conserve natural areas in line with federal, state or local 30-by-30 initiatives and the America the Beautiful vision.
- sustain or improve biodiversity
- implement the Global Biodiversity Framework locally — or adapt a relevant indicator set of your own
- plan for an implement nature-based solutions and
- provide equitable access to nature for community members.

Our Work



*Land Emissions And Removals Navigator
(LEARN) Tool*



*Status of Biodiversity in
King County*



Cities Biodiversity Index

The Cities Biodiversity Index (CBI) allows cities to evaluate and monitor biodiversity within their city and any biodiversity conservation efforts. The CBI acts as a means to track “success metrics” for nature and includes a city profile to showcase your community’s physical features, biodiversity features, demographics, economic parameters, and more. The bulk of the CBI are the 26 indicators to track your community’s biodiversity.

ICLEI USA can support your community to develop a Cities Biodiversity Index of your own. We offer multiple options for levels of service and a flexible approach that can be customized to your community’s needs and resources.

Services & Costs

The rates listed are ICLEI USA member-preferred pricing. Non-members can fill out the request for a [quote form](#) to receive pricing information.

Cities Biodiversity Index (Tier 1) | \$7,500

ICLEI USA technical staff collect data for the indicators most relevant to the America the Beautiful Initiative and the Global Biodiversity Framework Targets 1-3. The CBI indicators covered under the CBI Tier 1 service are indicators 1, 7 and 8. This includes the proportion of natural areas in the community, habitat restored, and proportion of protected natural areas. The Cities Biodiversity Index Tier 1 service is best for an initial assessment of a community’s biodiversity and to incorporate into a sustainability plan.

Cities Biodiversity Index (Tier 2) | \$12,500

ICLEI USA technical staff collect data for the indicators most relevant Global Biodiversity Framework Targets 2, 3, 7, 11, 12 & 14 (includes CBI Indicators 1, 7, 8, 10, 11, 12, 13, 14, 16, 17, 22, 23, & 24). These Global Biodiversity Targets were designated as the most appropriate targets for local governments to achieve. The Cities Biodiversity Index Tier 2 service is best for communities interested in participating in the global movement for nature.

Cities Biodiversity Index (Tier 3) | \$18,750

ICLEI USA technical staff collect data for all Cities Biodiversity Indicators. The Cities Biodiversity Index Tier 3 service is best for communities interested in participating in the global movement for nature and ensuring nature is integrated in every aspect of its governance.



Global Biodiversity Framework*

| | | |
|------------|----|---|
| 2050 Goals | A | Protect and Restore |
| | B | Prosper with Nature |
| | C | Share Benefits Fairly |
| | D | Invest and Collaborate |
| Targets | 1 | Plan and Manage all Areas To Reduce Biodiversity Loss |
| | 2 | Restore 30% of all Degraded Ecosystems |
| | 3 | Conserve 30% of Land, Waters and Seas |
| | 4 | Halt Species Extinction, Protect Genetic Diversity, and Manage Human-Wildlife Conflicts |
| | 5 | Ensure Sustainable, Safe and Legal Harvesting and Trade of Wild Species |
| | 6 | Reduce the Introduction of Invasive Alien Species by 50% and Minimize Their Impact |
| | 7 | Reduce Pollution to Levels That Are Not Harmful to Biodiversity |
| | 8 | Minimize the Impacts of Climate Change on Biodiversity and Build Resilience |
| | 9 | Manage Wild Species Sustainably To Benefit People |
| | 10 | Enhance Biodiversity and Sustainability in Agriculture, Aquaculture, Fisheries, and Forestry |
| | 11 | Restore, Maintain and Enhance Nature’s Contributions to People |
| | 12 | Enhance Green Spaces and Urban Planning for Human Well-Being and Biodiversity |
| | 13 | Increase the Sharing of Benefits From Genetic Resources, Digital Sequence Information and Traditional Knowledge |
| | 14 | Integrate Biodiversity in Decision-Making at Every Level |
| | 15 | Businesses Assess, Disclose and Reduce Biodiversity-Related Risks and Negative Impacts |
| | 16 | Enable Sustainable Consumption Choices To Reduce Waste and Overconsumption |
| | 17 | Strengthen Biosafety and Distribute the Benefits of Biotechnology |
| | 18 | Reduce Harmful Incentives by at Least \$500 Billion per Year, and Scale Up Positive Incentives for Biodiversity |
| | 19 | Mobilize \$200 Billion per Year for Biodiversity From all Sources, Including \$30 Billion Through International Finance |
| | 20 | Strengthen Capacity-Building, Technology Transfer, and Scientific and Technical Cooperation for Biodiversity |
| | 21 | Ensure That Knowledge Is Available and Accessible To Guide Biodiversity Action |
| | 22 | Ensure Participation in Decision-Making and Access to Justice and Information Related to Biodiversity for all |
| | 23 | Ensure Gender Equality and a Gender-Responsive Approach for Biodiversity Action |

*To see the full description of the Global Biodiversity Framework 2050 Goals and targets, please see the [Global Biodiversity Framework here](#).



Cities Biodiversity Index Indicators*

| | |
|----|---|
| 1 | Proportion of Natural Areas in the City |
| 2 | Connectivity Measures or Ecological Networks to Counter Fragmentation |
| 3 | Native Biodiversity in Built Up Areas (Bird Species) |
| 4 | Change in Number of Vascular Plant Species |
| 5 | Change in Number of Native Bird Species |
| 6 | Change in Number of Native Arthropod Species |
| 7 | Habitat Restoration |
| 8 | Proportion of Protected Natural Areas |
| 9 | Proportion of Invasive Alien Species |
| 10 | Regulation of Quantity of Water |
| 11 | Climate Regulation – Benefits of Trees and Greenery |
| 12 | Recreational Services |
| 13 | Health and Wellbeing – Proximity/Accessibility to Parks |
| 14 | Food Security Resilience – Urban Agriculture |
| 15 | Institutional Capacity |
| 16 | Budget Allocated to Biodiversity |
| 17 | Policies, Rules and Regulations – Existence of Local Biodiversity Strategy and Action Plan |
| 18 | Status of Natural Capital Assessment in the City |
| 19 | State of Green and Blue Space Management Plans in the City |
| 20 | Biodiversity Related Responses to Climate Change |
| 21 | Policy and/or Incentives for Green Infrastructure as Nature-based Solutions |
| 22 | Cross-sectoral and Inter-agency Collaborations |
| 23 | . Participation and Partnership: Existence of Formal or Informal Public Consultation Process Pertaining to Biodiversity Related Matters |
| 24 | Participation and Partnership: Number of Agencies/Private Companies/ NGOs/Academic Institutions/International Organizations with which the City is Partnering in Biodiversity Activities, Projects and Programmes |
| 25 | Number of Biodiversity Projects Implemented by the City Annually |
| 26 | Education |
| 27 | Awareness |
| 28 | Community Science |

*To see the full description of the Cities Biodiversity Index indicators, please see the [Cities Biodiversity Index Handbook here](#).



Mapping Biodiversity and Nature

ICLEI USA can assist your community in developing maps of the biodiversity and natural areas within your community. We offer two types of mapping:

- Natural Asset Map
- Natural Resources Inventories (NRI)

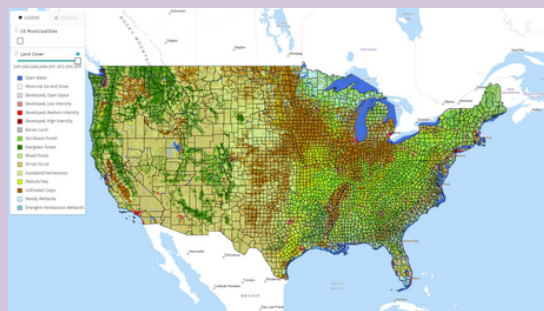
A Natural Asset Map focuses on the natural assets, land uses, ecosystem services, and major pressures to biodiversity in a city.

A Natural Resources Inventory dives into your community's physical resources, the resilience of your biodiversity, and culturally significant lands. We can support your community to create a comprehensive catalogue of these and more assets.

Our Work



*ICLEI Africa's Natural Asset Maps -
Jammu, India*



*Land Emissions And Removals Navigator
(LEARN) Tool*

Services & Costs

The rates listed are ICLEI USA member-preferred pricing. Non-members can fill out the request for a [quote form](#) to receive pricing information.

Natural Asset Map (Tier 1) | \$6,500

ICLEI USA technical staff will work with community members to develop a map of the natural assets, land uses, ecosystem services, and major pressures to biodiversity. A map of the communities' natural assets will be developed by an illustrator.

Natural Asset Map (Tier 2) | \$7,500

ICLEI USA technical staff will work with community members and collect publicly available data to develop a map of the natural assets, land uses, ecosystem services, and major pressures to biodiversity. A map of the communities' natural assets will be developed with GIS.

Natural Resource Inventory | \$10,000

ICLEI USA technical staff collect data for the community's physical resources, water resources, wildlife habitats, resilience and culturally significant lands. A map of the communities' natural assets will be developed with ArcGIS StoryMap.



Appendix J: Forest + Trees Outside of Forests Analysis

ICLEI USA published the Appendix J addition to the *U.S. Community Protocol* in 2019. This addition provides guidance to communities for estimating emissions and sequestration from forests and trees outside of forests (urban trees/street trees). In 2021, ICLEI USA, World Resources Institute, and Woodwell Climate Research Center developed the Land Emissions And Removals Navigator (LEARN) Tool to support communities with this analysis.

ICLEI USA can support your community in developing a forest and trees inventory with varying levels of detail, depending on your community's size and data availability.

Services & Costs

The rates listed are ICLEI USA member-preferred pricing. Non-members can fill out the request for a [quote form](#) to receive pricing information.

Appendix J/Forest + Trees Outside of Forests (Tier 1) | \$1,250

ICLEI USA technical staff will use the LEARN Tool to conduct the community's forest and trees outside of forest emissions and sequestration analysis. Tier 1 will include using a shapefile of the community's boundary to assess the emissions and sequestration.

Appendix J/Forest + Trees Outside of Forests (Tier 2) | \$5,000

ICLEI USA technical staff will use the LEARN Tool to conduct the community's forest and trees outside of forest emissions and sequestration analysis. Tier 2 will include using a shapefile of the community's boundary to assess the emissions and sequestration as well as using the iTree Analysis tools to collect more accurate trees outside of forest estimates.



Circular Services



Fee-based opportunities to help local governments apply the best practices for circular economy and sustainable and innovative procurement.



Circular Economy and Sustainable and Innovative Procurement

The global economy consumes 100 billion tons of material annually to provide shelter, food, clothing, transportation, energy, and water to the 8 billion people living on our planet. This rate has more than doubled since 1990 and is projected to reach 190 billion tons by 2060. With fast-paced growth in consumption comes the degradation of natural resources and increasing greenhouse gas emissions, with an estimated 70% of global emissions tied to material handling and use. In addition to the environmental impacts of consumption, the world has seen an increase in the standard of living, life expectancy, and access to education (Human Development Index). However, an uneven distribution of these advances and consumption growth has led to inequities in human development. Global disparities in living standards and access to resources remain apparent through the United Nation's (UN's) Human Development Index (HDI) and calls to achieve the Sustainable Development Goals (SDGs). Disparities in the HDI and additional well-being indicators also exist within the US between metropolitan areas, urban populations, and more rural populations.

Through the development of the circular economy, communities can redistribute resources to drive smart and equitable consumption, resilience, climate action, and biodiversity conservation while offering the tools to support social equity, local job creation, public health, and community wealth. In practice, this means shifting away from the linear economy's "take, make, waste" model and moving to an economic system that maintains the value and utility of infrastructure, products, components, materials, and nutrients for as long as possible. ICLEI USA's Circular Pathway supports the transition to the circular economy by providing resources, best practice examples and guides, one-on-one technical assistance, and more. Our fee-for-service options focus on key areas of influence for local and regional governments in the transition to a more circular economy: Sustainable Public Procurement, Food Systems, and the Built Environment.



Circular Economy and Sustainable and Innovative Procurement

ICLEI Circulars' Work



ICLEI's Circular Turku - A Roadmap Toward Resource Wisdom

Services & Costs

The rates listed are ICLEI USA member-preferred pricing. Non-members can fill out the request a [quote form](#) to receive pricing information.

Sustainable Public Procurement Policy Assessment w/ Recommendations | \$1,500

ICLEI USA technical experts will review an existing sustainable procurement policy and provide recommendations for continual improvement, both policy-focused and procedural. This review may include an assessment of the tools used to monitor progress and interviews with procurers and departments.

Sustainable Public Procurement Policy Roadmap | \$5,000 - \$8,000*

ICLEI USA technical experts will develop a roadmap to facilitate the adoption of a Sustainable Public Procurement policy or program. This may include defining the organization's procurement system, facilitating up to two staff training sessions, mapping and supporting engagement with stakeholders, assessing existing policies, defining the scope of the policy, and setting SMART targets. The roadmap will lay the foundations for the policy adoption process and will include a list of recommended actions to include in the policy. Key sectors to consider may include construction, information and technology, cleaning, food and catering, vehicles, and electricity.

Circular Built Environment Roadmap | \$5,000 - \$8,000*

ICLEI USA technical experts will develop a roadmap to showcase your community's built environment transition through the circular pathway lens. Depending on your community's plans, this could include a focus on renewable energy recycling, bike or car share programs, sustainable infrastructure, and more.

Circular Food Systems Roadmap | \$5,000 - \$8,000*

ICLEI USA technical experts will develop a roadmap to facilitate the transition to a more circular food system in a community or region. This may include defining the food system, mapping and supporting engagement with stakeholders, identifying interventions, and developing an implementation plan for the roadmap. Areas of focus may include addressing food waste, composting programs, regenerative agriculture, and more!

*Fee may vary based on scope, level of effort required, and the availability of data.





Equity-Building Services

Fee-based opportunities to help your community advance justice, increase community engagement, and follow a people-centered pathway.

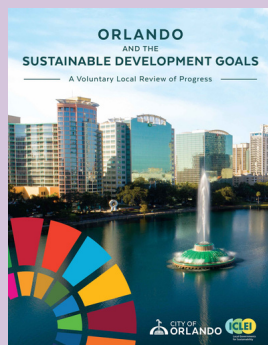


Getting Started With Equity

Cities, towns and counties are vibrant hubs where people live, work, and play. They are also sources of community expertise and cultural heritage. As local governments address climate change by mitigating emissions and adapting to impacts, both climate equity and climate justice need to be core features of climate action. In every municipality, there are community members who will disproportionately experience the brunt of climate change, normally described as frontline or disadvantaged communities. These communities often face historical inequities while also being the most at risk for negative climate change impacts. When developing integrated climate action plans and sustainability plans, special focus needs to be placed on frontline communities to ensure that these inequities are resolved and not worsened by climate change.

To address inequities in your community, you need to start by determining where the disadvantaged areas in your community are and what are the inequities they face. ICLEI USA offers two assessments to help local governments determine these inequities and align their programming with the Justice40 initiative.

Our Work



Orlando & the Sustainable Development Goals
A Voluntary Local Review of Progress

Services & Costs

The rates listed are ICLEI USA member-preferred pricing. Non-members can fill out the [request for a quote form](#) to receive pricing information.

Voluntary Local Review (VLR)

ICLEI USA experts will provide a structured process and expertise to help local governments assess their progress towards the UN Sustainable Development Goals through [Voluntary Local Reviews](#).

5 Goal Areas: \$10k

Up to 9 Goal Areas: \$12k

10+ goals: \$15k - 20k, depending on scoping



ABOUT ICLEI USA

ICLEI is the first and largest global network of local and regional governments devoted to solving the world's most intractable sustainability challenges. ICLEI USA's standards, tools, and programs credibly, transparently, and robustly reduce greenhouse gas emissions, improve lives and livelihoods and protect natural resources in the U.S. communities we serve. Through a data-driven approach and focus on just and equitable communities, ICLEI USA and our network partners are working to keep 1.5 °C alive.



This work is licensed under a [Creative Commons Attribution-NonCommercial-NoDerivatives 4.0 International License](https://creativecommons.org/licenses/by-nc-nd/4.0/). It may not be used for any commercial purpose. Any non-commercial use of this material must provide attribution to ICLEI Local Governments for Sustainability USA.