



# ICLEI USA's Adaptation & Resilience Services

*Fee-based opportunities to help local governments assess climate vulnerability, adapt to impacts, and build resilient communities.*

ICLEI USA delivers high-quality products that build local government capacity and ensure long-term success. Unlike a traditional consultant, our work does not end when the final deliverables are submitted. We continue to support member communities and celebrate your successes so that others can follow your lead.



# Integrated Climate Action Services

Climate change is not a distant crisis but an unfolding challenge with impacts felt here and now. Recognizing the growing need for preparedness alongside decarbonization, we want to help your community develop a Climate Action Plan that addresses both climate mitigation (assessing and reducing greenhouse gas emissions) and adaptation (assessing and reducing vulnerability to climate change impacts in ways that foster community resilience). If your community has already developed a mitigation-focused climate action plan, we can help incorporate adaptation into the plan update.

## What are the benefits of an integrated Climate Action Plan?

First, consolidating adaptation and mitigation planning processes into one will save resources and time. In particular, community engagement is very resource consumptive, so it is more efficient to consolidate topics as opposed to doing separate outreach processes. It is also likely that more departments and stakeholders will be involved in a process that achieves multiple goals, which fosters greater sharing of knowledge and resources.

Additionally, integrating both adaptation and mitigation facilitates the identification of “synergistic” measures, i.e. those that address both mitigation and adaptation simultaneously to maximize benefits of implementation. Lastly, integrating these two processes ensures that the community does not adopt any emission reduction strategies that are counterproductive to adaptation, and vice versa.

## Services & Costs

### Integrated Climate Action Plan | *Contact us for a quote*

A team of ICLEI USA technical experts will work together to create an integrated Climate Action Plan that includes a vulnerability assessment and adaptation strategies, in addition to a greenhouse gas inventory and emissions reduction strategies.

### Incorporating Adaptation Into Mitigation-Focused Plan | *Contact us for a quote*

ICLEI USA technical experts create a more basic adaptation component to incorporate into a mitigation-focused CAP that already exists or that ICLEI has been contracted to lead.

# Vulnerability Assessments and Adaptation Plans



ICLEI USA can assist your community in conducting a climate risk and vulnerability assessment (CRVA) as part of a greater climate adaptation/action planning process, or as a standalone effort. We offer multiple options for levels of service and a flexible approach that can be customized to your community's needs and resources.

## Services & Costs

The rates listed are ICLEI USA member-preferred pricing. Non-members can fill out the request for a [quote form](#) to receive pricing information.

### Basic Support

#### Climate Conditions Report | \$6,200

ICLEI USA technical staff identify the top climate hazards that impact your community now and in the future, describe how these hazards are expected to change, and interpret the latest research and climate projections for your area. The Climate Conditions Report can serve as the foundation for a more in-depth assessment of community vulnerability or an adaptation plan, or be incorporated into a CAP draft or update.

#### Climate Risk and Vulnerability Assessment Foundations Memo | \$9,000

ICLEI USA completes preliminary desk research that serves as the foundation of a community-led Climate Risk and Vulnerability Assessment. Our technical experts start by researching present and future climate conditions to help communities understand their climate risk. We also provide a list of suggested community systems and assets, public services, and sectors that may be more vulnerable to the impacts of climate change. This package lays the foundation for a more in-depth assessment of vulnerability and community engagement. This offer can be customized to align with the requirements of the Global Covenant of Mayors (GCoM) for an additional \$875 fee.

#### Gap Analysis | \$5,000 - \$15,000\*

ICLEI USA can identify and help you fill in gaps in your community's climate adaptation planning. For example, if your community is covered by a regional vulnerability assessment, our technical experts can help you expand and contextualize the results to reflect your community's context.

\*Hours estimated as these projects are highly context-specific.

#### Climate Risk Map Report | \$10,000\*

ICLEI USA technical staff will use spatial data to conduct a desktop analysis of climate hazard risk in your community. This report includes custom maps showing hazard exposure, social vulnerability, and community assets to help you understand which neighborhoods, populations, and infrastructure are most vulnerable to climate hazards. You can use this report as a foundation for further risk and vulnerability analyses or to prioritize areas for climate action.

\*Fee variable based on the level of effort/depth of work requested.



# Services & Costs - Vulnerability Assessments and Adaptation Plans

The rates listed are ICLEI USA member-preferred pricing. Non-members can fill out the request for a [quote form](#) to receive pricing information.

## Advanced Support

### Climate Risk and Vulnerability Assessment (CRVA) | *Contact us for a quote\**

ICLEI USA technical staff assist your community in completing a climate risk and vulnerability assessment. The CRVA is an essential element of community resilience and preparedness. A CRVA will illuminate your community's exposure, risks and capacity to adapt to climate change impacts. This offer includes regular client check-ins, analysis of climate data, workshop support, and writing the final report. \*Fee varies based on number of stakeholder workshops and ICLEI's role in public engagement.

### Climate Adaptation Plan | *Contact us for a quote\**

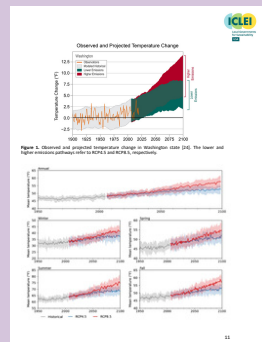
ICLEI USA can assist your community with developing a standalone Climate Adaptation Plan, if an integrated CAP is not desired or feasible. A Climate Adaptation Plan includes a climate vulnerability assessment and an adaptation strategy.

\*Fee variable based on the level of effort/depth of work requested.

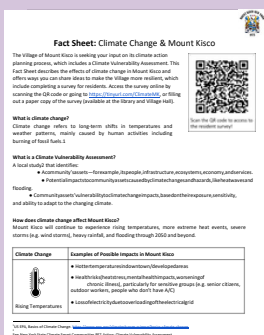
## Our Work



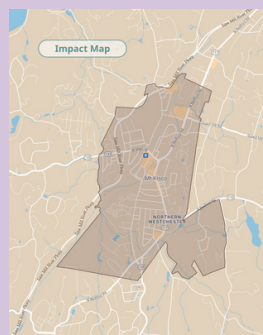
Mount Kisco, NY, Survey Flier



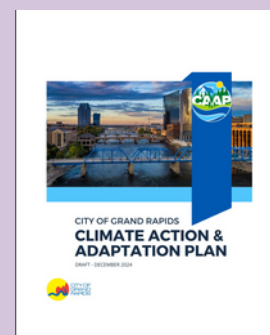
Olympia, WA, Climate Conditions Report



Fact Sheet: Climate Change & Mount Kisco, NY



Mount Kisco, NY, Community Engagement Boards



Grand Rapids, MI Climate Action and Adaptation Plan



# VULNERABILITY ASSESSMENTS AND ADAPTATION PLANS OFFERINGS COMPARISON

- X** Standard element of the offering
- O** Not standard to the offering but can be included for an additional fee

	Climate Conditions Report	Climate Risk Map Report	CRVA Foundations Memo	CRVA	Adaptation Plan	ICAP
Climate data and projections	X	X	X	X	X	X
ICLEI writes memo or report document (Google Docs)	X	X	X	X	X	X
Custom Canva design	O	O	O	O	O	O
Mapped climate hazards (GIS)		X	O	O	O	O
Existing plan review			X	O	X	X
List of vulnerable systems and assets (based on desk research)			X			
Materials and support with internal stakeholder engagement (e.g. workshop design, facilitation) to assess vulnerability and risk				X	X	X
Materials and support with public/community engagement (e.g. workshop design, facilitation)				O	O	O
List of suggested adaptation strategies					X	X
Materials and support with internal stakeholder engagement (e.g. workshop design, facilitation) to identify and select adaptation strategies					X	X
Support with implementation matrices and planning					X	X
Project design and deliverables include GHG mitigation						X



# Custom Workshops

ICLEI USA's experienced team offers in person and online workshops on many aspects of climate planning and implementation.

Potential topics include:

- Results of a climate risk and vulnerability assessment or greenhouse gas inventory
- Basics of climate adaptation planning and integrated Climate Action Plans
- Facilitating the action identification and prioritization process for a Climate Action or Adaptation Plan
- Community visioning, target setting, and equitable engagement

This list is not comprehensive. Let us know your audience (staff, partners, the public) and goals (education, knowledge generation, facilitated decision-making) are and we will be in touch.



"[ICLEI's] workshop opened our eyes to how important stakeholder ownership is for achieving engagement in climate resiliency activities within our city government. It helped us address the paralysis caused from the perceived enormity of mitigation actions; we now recognize that the steps we can take will not be as hard as people imagine, and will ultimately save money. Over the next 12 to 18 months, we are planning to use the ICLEI workshop as a catalyst for additional dialogue-inducing workshops."

**- Jeremy Pathmanabhan, Program Manager Climate Change, City of Los Angeles CA**

## Services & Costs

The rates listed are ICLEI USA member-preferred pricing. Non-members can fill out the request for a [quote form](#) to receive pricing information.

### Virtual Webinar | \$500\*

A customized, 1-2 hour virtual webinar including a Q&A session with ICLEI technical experts on a topic related to climate change adaptation.

### Virtual Workshop | \$2,000\*

An interactive, half-day workshop with ICLEI technical experts on a topic related to climate change adaptation.

### In-Person Workshop | \$30,000\*

A two-day, in-person interactive workshop that may address multiple topics (e.g. climate adaptation and mitigation). Includes a report of workshop outcomes and recommendations.

\*Fee may vary based on the scope and level of effort required.



# Consulting Hours

Have ICLEI's team of resilience technical experts on call during your climate adaptation process. Our consulting hours packages give you the flexibility to ask for ICLEI's guidance when and how you need it.

With our consulting hours packages, we can:

- Help map out a customized vulnerability assessment or adaptation planning process that meets your community's needs
- Co-develop community and stakeholder engagement plans for climate adaptation projects
- Help design activities to engage different groups of stakeholders and train facilitators
- Review and provide feedback on climate data and analysis
- Review and provide feedback on drafts of deliverables, including plans, presentations, and surveys



"Every community should undertake a climate vulnerability assessment and we feel privileged to have ICLEI's support as we launch ours. The assessment will help us plan for changing future conditions. It will also help us make investments now that will ensure the resiliency of our community after we are long gone. Climate adaptation is not a choice—it is a duty!"

**- Honorable Mayor Nicola Armacost, Village of Hastings-on-Hudson, NY**

## Services & Costs

The rates listed are ICLEI USA member-preferred pricing. Non-members can fill out the request for a [quote form](#) to receive pricing information.

5-Hour Package | \$775

10-Hour Package | \$1,550

20-Hour Package | \$3,100



# ABOUT ICLEI USA

---

ICLEI is the first and largest global network of local and regional governments devoted to solving the world's most intractable sustainability challenges. ICLEI USA's standards, tools, and programs credibly, transparently, and robustly reduce greenhouse gas emissions, improve lives and livelihoods and protect natural resources in the U.S. communities we serve. Through a data-driven approach and focus on just and equitable communities, ICLEI USA and our network partners are working to keep 1.5 °C alive.



This work is licensed under a [Creative Commons Attribution-NonCommercial-NoDerivatives 4.0 International License](https://creativecommons.org/licenses/by-nc-nd/4.0/). It may not be used for any commercial purpose. Any non-commercial use of this material must provide attribution to ICLEI Local Governments for Sustainability USA.