

# ICLEI USA's Fee for Services

*Fee-based opportunities to help your community reduce emissions, improve the circular economy, build resilience, advance nature-based solutions, and more.*



ICLEI USA delivers high-quality products that build local government capacity and ensure long-term success. Unlike a traditional consultant, our work does not end when the final deliverables are submitted. We continue to support member communities and celebrate your successes so that others can follow your lead.

# Table of Contents

---

<b>Decarbonization Services</b>	<b>03</b>
Getting to Zero Emission	04
Greenhouse Gas Inventories	05
Wedge Analysis	06
Climate Action Plans	07
Consulting Hours	08
<b>Adaptation &amp; Resilience Services</b>	<b>09</b>
Integrated Climate Action Services	10
Vulnerability Assessments and Adaptation Plans	11
Custom Workshops	14
Consulting Hours	15
<b>Nature-Based Services</b>	<b>16</b>
Integrating Nature into Your Community's Initiatives	17
Cities Biodiversity Index	18
Mapping Biodiversity and Nature	21
Appendix J: Forest + Trees Outside of Forests Analysis	22
<b>Circular Services</b>	<b>23</b>
Circular Economy and Sustainable and Innovative Procurement	24
<b>Equity-Building Services</b>	<b>26</b>
Getting Started With Equity	27



# Decarbonization Services



*Fee-based opportunities to help your community get on a zero emission pathway.*



# Zero Emissions



For more than 30 years, ICLEI USA's greenhouse gas (GHG) emissions frameworks, standards, tools, and reporting platforms have allowed thousands of local governments to advance data-driven emissions management practices and to measurably reduce energy use and carbon pollution.

Highlights include:

- 1995: ICLEI launches Cities for Climate Protection (CCP) in the U.S., the world's first and largest program supporting cities in climate action planning.
- 2009: More than 500 local governments become ICLEI members, utilizing resources for pursuing emissions targets committed under the Mayors Climate Protection Agreement.
- 2012: ICLEI USA's *U.S. Community Protocol* is released after a three-year stakeholder process, establishing what is now the most widely used data-driven framework for local emissions accounting and reporting nationwide.
- 2013: ICLEI USA's ClearPath Climate Planner Tool software platform is launched.
- 2018: Launch of guidance to account for forest and tree greenhouse gas emissions and removal of carbon from the atmosphere, with U.S. Community Protocol Appendix J.
- 2020: Land Emissions And Removals Navigator (LEARN) tool is launched to allow communities to easily calculate their forest and tree emissions and removals in accordance with Appendix J.



"ICLEI - Local Governments for Sustainability is the oldest and most effective nonprofit working on climate issues with local governments. They are the leading group that helps local governments create a baseline greenhouse gas {GHG} inventory, which becomes the road map for reducing GHG emissions. They also are one of the most active groups assisting local governments to develop and implement climate action plans, making communities more resilient. And they do this work at a surprisingly low cost. They are my 'go to' group for everything climate-related."

**- Brigid Shea, Travis County Commissioner, Precinct 2**

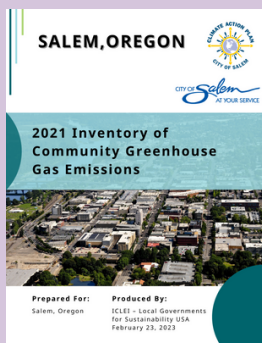


# Greenhouse Gas Inventories

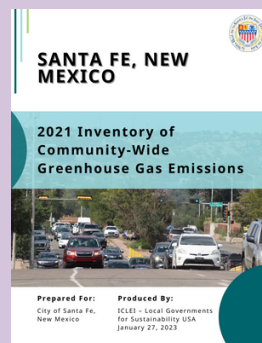
Inventorying sources of greenhouse gas (GHG) emissions and related activities is the first step toward taking action on climate change. A GHG inventory provides an evidence base to set and act on community climate goals and, importantly, to measure the progress of mitigation actions over time. To ensure that GHG inventories are transparent, consistent, and defensible, ICLEI USA developed the GHG accounting protocols that are the standard protocols used by local and regional government agencies across the globe.

To support the application of the protocols, ICLEI USA developed and maintains an online suite of emissions management tools packaged together within the ClearPath Climate Planning Tool. ICLEI USA staff will prepare data requests, work with community staff to retrieve data, review and condition data, complete the inventory using ICLEI's ClearPath Climate Planning Tool, and prepare a written report of results. Inventories can be conducted according to the Local Government Operations Protocol, *U.S. Community Protocol*, the Global Protocol for Community-Scale emissions (GPC) Basic Protocol, or GPC Basic Plus Protocol.

## Our Work



*Salem, OR, 2021 Community-Wide Greenhouse Gas Emissions Inventory*



*Santa Fe, NM, 2021 Community-Wide Greenhouse Gas Emissions Inventory*

## Services & Costs

The rates listed are ICLEI USA member-preferred pricing. Non-members can fill out the request for a [quote form](#) to receive pricing information.

**Community-Wide GHG Inventory and Narrative Report of Results | \$9,000**

The base price is for a typical inventory; ICLEI will quote additional time for inventories that include ports, airports, multiple utilities or other non-typical emissions sources or sectors.

**Local Government Operations GHG Inventory and Narrative Report of Results | \$9,000**

**24/7 hour electricity emissions analysis (add-on to community GHGI) | \$2,500**

Will produce charts of electricity emissions by season and time of day.

**Annual Comparison (per year added) | \$2,200**

ICLEI USA will include previous years' GHG Inventories in the written report and provide comparison tables and discussion of changes year-over-year.

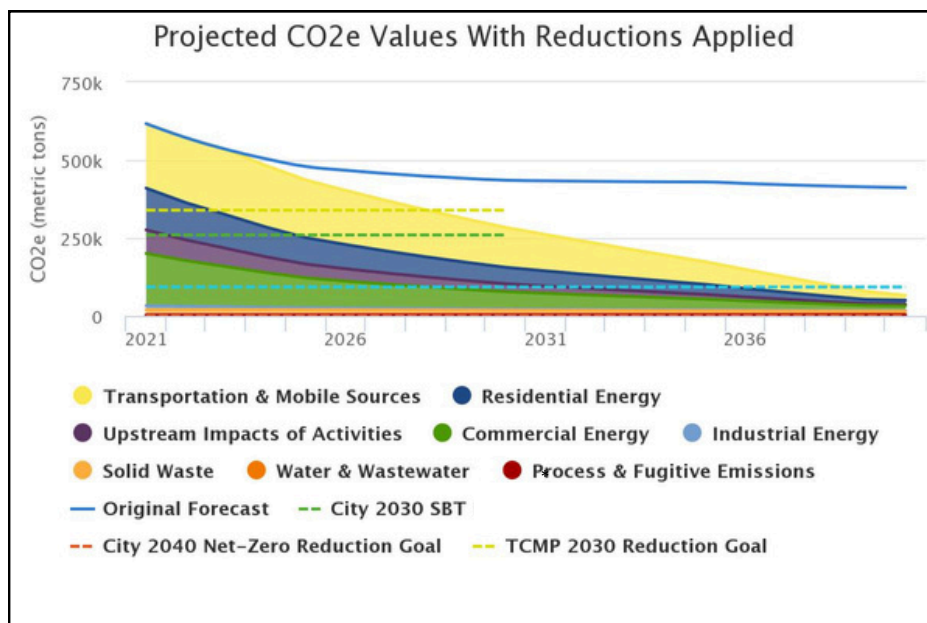


# Wedge Analysis

Building on a completed GHG inventory, ICLEI USA will work with government staff and stakeholders to develop a “wedge analysis” to develop pathways to inform community climate mitigation strategies. ICLEI USA will model, evaluate, and create city or county-specific scenarios for up to five short-, mid-, and long-term policies (15 total) for the consideration of internal and external stakeholders. These will be scenarios, such as “electrify 10% of buildings each year,” rather than specific actions.

The Wedge Analysis includes a summary of overall and sector-specific emissions projections for the near-term (e.g., 2030-2035) and long-term (e.g., 2050). Deliverables:

- Measure identification and prioritization
- Target-setting memo
- Matrix of community-wide GHG mitigation measures (short-term; mid-term; long-term) prioritized actions in each: control, collaborate, and advocate
- Summary of baseline conditions and projected reductions.
- Presentation materials
- Virtual meeting attendance



*An example of a wedge analysis showing aggressive emissions reduction scenario.*

## Services & Costs

Wedge Analysis | [Contact us for a quote](#)



# Climate Action Plans

From a baseline inventory of GHG emissions, forecasted emissions, and high-impact actions identified, the final element of emissions management is the development of a mitigation-focused climate action plan (CAP).

The ICLEI USA team will review existing documents related to any existing CAPs, general planning, and GHG inventories. These documents will be reviewed with an eye toward consistency with the existing ClearPath documentation and a focus on the ability of ClearPath to model predicted emissions reductions of measures as they are described in other documents. Any gaps in existing capabilities for modeling these actions will be identified.

Local government staff should work collaboratively with the community to identify targeted, effective strategies to achieve the community's GHG reduction goals while applying principles of equity, inclusive engagement, and recognition of changing climate conditions.

ICLEI will provide modeling and analysis in ClearPath and incorporate stakeholder input to identify possibilities for reducing GHG emissions. The CAP will serve as an immediate-, mid-, and long-term planning resource and roadmap for developing implementation strategies for each recommended action, which will require ongoing stakeholder input and support.

To achieve significant GHG reductions while incorporating other relevant planning goals, GHG reduction measures may include both measures that reduce GHG emissions and/or measures that enhance carbon sinks with nature-based solutions.

## Our Work



Jersey City, NJ, [2021 Climate and Energy Action Plan](#)



Santa Fe County, NM, [2023 Community Greenhouse Gas Climate Action Plan](#)

## Services & Costs

Climate Action Plan | *Contact us for a quote*



# Consulting Hours

Expand your capacity to complete climate mitigation actions by engaging ICLEI's team of technical experts. Our consulting packages provide flexibility to access ICLEI's guidance when and how you need it.

With our consulting hours packages, we can:

- Design and implement a customized GHG analysis workshop
- Review and provide feedback on climate data and analysis
- Review and provide feedback on drafts of deliverables, including plans, presentations, and surveys
- Complete a Contribution Analysis to better understand the drivers of change
- Detailed quality assurance review of records, calculations, and assumptions used to develop ClearPath GHG inventory
- Customize your package



## Services & Costs

The rates listed are ICLEI USA member-preferred pricing. Non-members can fill out the request for a [quote form](#) to receive pricing information.

5-Hour Package | \$775

10-Hour Package | \$1,550

20-Hour Package | \$3,100





# Adaptation & Resilience Services



*Fee-based opportunities to help local governments assess climate vulnerability, adapt to impacts, and build resilient communities.*





# Integrated Climate Action Services

Climate change is not a distant crisis but an unfolding challenge with impacts felt here and now. Recognizing the growing need for preparedness alongside decarbonization, we want to help your community develop a Climate Action Plan that addresses both climate mitigation (assessing and reducing greenhouse gas emissions) and adaptation (assessing and reducing vulnerability to climate change impacts in ways that foster community resilience). If your community has already developed a mitigation-focused climate action plan, we can help incorporate adaptation into the plan update.

## What are the benefits of an integrated Climate Action Plan?

First, consolidating adaptation and mitigation planning processes into one will save resources and time. In particular, community engagement is very resource consumptive, so it is more efficient to consolidate topics as opposed to doing separate outreach processes. It is also likely that more departments and stakeholders will be involved in a process that achieves multiple goals, which fosters greater sharing of knowledge and resources.

Additionally, integrating both adaptation and mitigation facilitates the identification of “synergistic” measures, i.e. those that address both mitigation and adaptation simultaneously to maximize benefits of implementation. Lastly, integrating these two processes ensures that the community does not adopt any emission reduction strategies that are counterproductive to adaptation, and vice versa.

## Services & Costs

### Integrated Climate Action Plan | *Contact us for a quote*

A team of ICLEI USA technical experts will work together to create an integrated Climate Action Plan that includes a vulnerability assessment and adaptation strategies, in addition to a greenhouse gas inventory and emissions reduction strategies.

### Incorporating Adaptation Into Mitigation-Focused Plan | *Contact us for a quote*

ICLEI USA technical experts create a more basic adaptation component to incorporate into a mitigation-focused CAP that already exists or that ICLEI has been contracted to lead.

# Vulnerability Assessments and Adaptation Plans



ICLEI USA can assist your community in conducting a climate risk and vulnerability assessment (CRVA) as part of a greater climate adaptation/action planning process, or as a standalone effort. We offer multiple options for levels of service and a flexible approach that can be customized to your community's needs and resources.

## Services & Costs

The rates listed are ICLEI USA member-preferred pricing. Non-members can fill out the request for a [quote form](#) to receive pricing information.

### Basic Support

#### Climate Conditions Report | \$6,200

ICLEI USA technical staff identify the top climate hazards that impact your community now and in the future, describe how these hazards are expected to change, and interpret the latest research and climate projections for your area. The Climate Conditions Report can serve as the foundation for a more in-depth assessment of community vulnerability or an adaptation plan, or be incorporated into a CAP draft or update.

#### Climate Risk and Vulnerability Assessment Foundations Memo | \$9,000

ICLEI USA completes preliminary desk research that serves as the foundation of a community-led Climate Risk and Vulnerability Assessment. Our technical experts start by researching present and future climate conditions to help communities understand their climate risk. We also provide a list of suggested community systems and assets, public services, and sectors that may be more vulnerable to the impacts of climate change. This package lays the foundation for a more in-depth assessment of vulnerability and community engagement. This offer can be customized to align with the requirements of the Global Covenant of Mayors (GCoM) for an additional \$875 fee.

#### Gap Analysis | \$5,000 - \$15,000\*

ICLEI USA can identify and help you fill in gaps in your community's climate adaptation planning. For example, if your community is covered by a regional vulnerability assessment, our technical experts can help you expand and contextualize the results to reflect your community's context.

\*Hours estimated as these projects are highly context-specific.

#### Climate Risk Map Report | \$10,000\*

ICLEI USA technical staff will use spatial data to conduct a desktop analysis of climate hazard risk in your community. This report includes custom maps showing hazard exposure, social vulnerability, and community assets to help you understand which neighborhoods, populations, and infrastructure are most vulnerable to climate hazards. You can use this report as a foundation for further risk and vulnerability analyses or to prioritize areas for climate action.

\*Fee variable based on the level of effort/depth of work requested.



# Services & Costs - Vulnerability Assessments and Adaptation Plans

The rates listed are ICLEI USA member-preferred pricing. Non-members can fill out the request for a [quote form](#) to receive pricing information.

## Advanced Support

### Climate Risk and Vulnerability Assessment (CRVA) | *Contact us for a quote\**

ICLEI USA technical staff assist your community in completing a climate risk and vulnerability assessment. The CRVA is an essential element of community resilience and preparedness. A CRVA will illuminate your community's exposure, risks and capacity to adapt to climate change impacts. This offer includes regular client check-ins, analysis of climate data, workshop support, and writing the final report. \*Fee varies based on number of stakeholder workshops and ICLEI's role in public engagement.

### Climate Adaptation Plan | *Contact us for a quote\**

ICLEI USA can assist your community with developing a standalone Climate Adaptation Plan, if an integrated CAP is not desired or feasible. A Climate Adaptation Plan includes a climate vulnerability assessment and an adaptation strategy.

\*Fee variable based on the level of effort/depth of work requested.

## Our Work



Mount Kisco, NY, Survey Flier

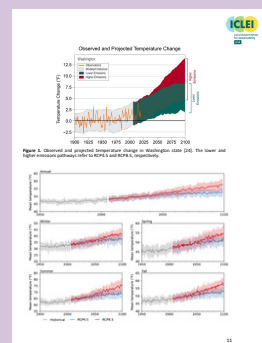
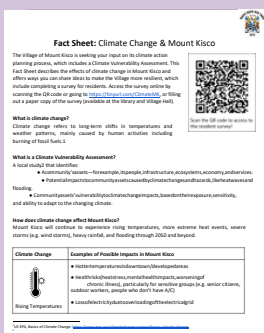
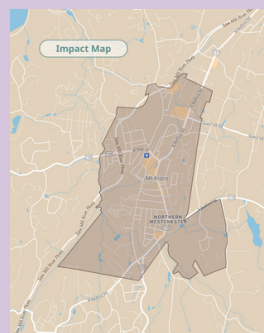


Figure 4. Observed and projected average annual change in temperature from 2010. The base and higher emissions pathways refer to RCP4.5 and RCP8.5, respectively.

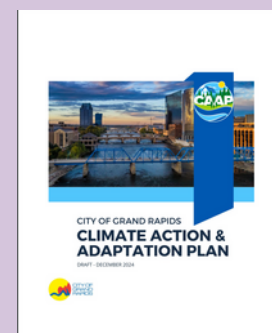
Olympia, WA, Climate Conditions Report



Fact Sheet: Climate Change & Mount Kisco, NY



Mount Kisco, NY, Community Engagement Boards



Grand Rapids, MI Climate Action and Adaptation Plan



# VULNERABILITY ASSESSMENTS AND ADAPTATION PLANS OFFERINGS COMPARISON

- X** Standard element of the offering
- O** Not standard to the offering but can be included for an additional fee

	Climate Conditions Report	Climate Risk Map Report	CRVA Foundations Memo	CRVA	Adaptation Plan	ICAP
Climate data and projections	X	X	X	X	X	X
ICLEI writes memo or report document (Google Docs)	X	X	X	X	X	X
Custom Canva design	O	O	O	O	O	O
Mapped climate hazards (GIS)		X	O	O	O	O
Existing plan review			X	O	X	X
List of vulnerable systems and assets (based on desk research)			X			
Materials and support with internal stakeholder engagement (e.g. workshop design, facilitation) to assess vulnerability and risk				X	X	X
Materials and support with public/community engagement (e.g. workshop design, facilitation)				O	O	O
List of suggested adaptation strategies					X	X
Materials and support with internal stakeholder engagement (e.g. workshop design, facilitation) to identify and select adaptation strategies					X	X
Support with implementation matrices and planning					X	X
Project design and deliverables include GHG mitigation						X



# Custom Workshops

ICLEI USA's experienced team offers in person and online workshops on many aspects of climate planning and implementation.

Potential topics include:

- Results of a climate risk and vulnerability assessment or greenhouse gas inventory
- Basics of climate adaptation planning and integrated Climate Action Plans
- Facilitating the action identification and prioritization process for a Climate Action or Adaptation Plan
- Community visioning, target setting, and equitable engagement

This list is not comprehensive. Let us know your audience (staff, partners, the public) and goals (education, knowledge generation, facilitated decision-making) are and we will be in touch.



"[ICLEI's] workshop opened our eyes to how important stakeholder ownership is for achieving engagement in climate resiliency activities within our city government. It helped us address the paralysis caused from the perceived enormity of mitigation actions; we now recognize that the steps we can take will not be as hard as people imagine, and will ultimately save money. Over the next 12 to 18 months, we are planning to use the ICLEI workshop as a catalyst for additional dialogue-inducing workshops."

**- Jeremy Pathmanabhan, Program Manager Climate Change, City of Los Angeles CA**

## Services & Costs

The rates listed are ICLEI USA member-preferred pricing. Non-members can fill out the request for a [quote form](#) to receive pricing information.

### Virtual Webinar | \$500\*

A customized, 1-2 hour virtual webinar including a Q&A session with ICLEI technical experts on a topic related to climate change adaptation.

### Virtual Workshop | \$2,000\*

An interactive, half-day workshop with ICLEI technical experts on a topic related to climate change adaptation.

### In-Person Workshop | \$30,000\*

A two-day, in-person interactive workshop that may address multiple topics (e.g. climate adaptation and mitigation). Includes a report of workshop outcomes and recommendations.

\*Fee may vary based on the scope and level of effort required.



# Consulting Hours

Have ICLEI's team of resilience technical experts on call during your climate adaptation process. Our consulting hours packages give you the flexibility to ask for ICLEI's guidance when and how you need it.

With our consulting hours packages, we can:

- Help map out a customized vulnerability assessment or adaptation planning process that meets your community's needs
- Co-develop community and stakeholder engagement plans for climate adaptation projects
- Help design activities to engage different groups of stakeholders and train facilitators
- Review and provide feedback on climate data and analysis
- Review and provide feedback on drafts of deliverables, including plans, presentations, and surveys



"Every community should undertake a climate vulnerability assessment and we feel privileged to have ICLEI's support as we launch ours. The assessment will help us plan for changing future conditions. It will also help us make investments now that will ensure the resiliency of our community after we are long gone. Climate adaptation is not a choice—it is a duty!"

**- Honorable Mayor Nicola Armacost, Village of Hastings-on-Hudson, NY**

## Services & Costs

The rates listed are ICLEI USA member-preferred pricing. Non-members can fill out the request for a [quote form](#) to receive pricing information.

5-Hour Package | \$775

10-Hour Package | \$1,550

20-Hour Package | \$3,100



# Nature-Based Services



*Fee-based opportunities to help your community advance nature-based solutions, enhance biodiversity, and connect people to nature's benefits.*





# Integrating Nature into Your Community's Initiatives

Alongside the climate change crisis, communities are grappling with the biodiversity crisis. The loss of natural habitat, the challenges providing equitable access to nature and the ecosystem services to humans — **such as clean water, clean air, healthy food and medicines, carbon sequestration, environmental hazard protection** and much more — contribute heavily to the climate crisis.

Recognizing the urgency of this biodiversity loss — and building on **ICLEI's unique role as the United Nations focal point organization on cities and nature** — we want to help your community develop a plan that addresses nature conservation and biodiversity.

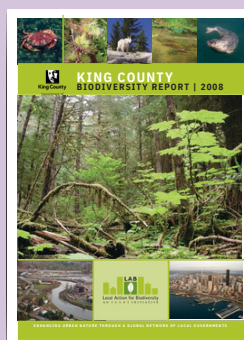
We support communities to:

- conserve natural areas in line with federal, state or local 30-by-30 initiatives and the America the Beautiful vision.
- sustain or improve biodiversity
- implement the Global Biodiversity Framework locally — or adapt a relevant indicator set of your own
- plan for an implement nature-based solutions and
- provide equitable access to nature for community members.

## Our Work



*Land Emissions And Removals Navigator  
(LEARN) Tool*



*Status of Biodiversity in  
King County*





# Cities Biodiversity Index

The Cities Biodiversity Index (CBI) allows cities to evaluate and monitor biodiversity within their city and any biodiversity conservation efforts. The CBI acts as a means to track “success metrics” for nature and includes a city profile to showcase your community’s physical features, biodiversity features, demographics, economic parameters, and more. The bulk of the CBI are the 26 indicators to track your community’s biodiversity.

ICLEI USA can support your community to develop a Cities Biodiversity Index of your own. We offer multiple options for levels of service and a flexible approach that can be customized to your community’s needs and resources.

## Services & Costs

The rates listed are ICLEI USA member-preferred pricing. Non-members can fill out the request for a [quote form](#) to receive pricing information.

### Cities Biodiversity Index (Tier 1) | \$7,500

ICLEI USA technical staff collect data for the indicators most relevant to the America the Beautiful Initiative and the Global Biodiversity Framework Targets 1-3. The CBI indicators covered under the CBI Tier 1 service are indicators 1, 7 and 8. This includes the proportion of natural areas in the community, habitat restored, and proportion of protected natural areas. The Cities Biodiversity Index Tier 1 service is best for an initial assessment of a community’s biodiversity and to incorporate into a sustainability plan.

### Cities Biodiversity Index (Tier 2) | \$12,500

ICLEI USA technical staff collect data for the indicators most relevant Global Biodiversity Framework Targets 2, 3, 7, 11, 12 & 14 (includes CBI Indicators 1, 7, 8, 10, 11, 12, 13, 14, 16, 17, 22, 23, & 24). These Global Biodiversity Targets were designated as the most appropriate targets for local governments to achieve. The Cities Biodiversity Index Tier 2 service is best for communities interested in participating in the global movement for nature.

### Cities Biodiversity Index (Tier 3) | \$18,750

ICLEI USA technical staff collect data for all Cities Biodiversity Indicators. The Cities Biodiversity Index Tier 3 service is best for communities interested in participating in the global movement for nature and ensuring nature is integrated in every aspect of its governance.



# Global Biodiversity Framework\*

2050 Goals	A	Protect and Restore
	B	Prosper with Nature
	C	Share Benefits Fairly
	D	Invest and Collaborate
Targets	1	Plan and Manage all Areas To Reduce Biodiversity Loss
	2	Restore 30% of all Degraded Ecosystems
	3	Conserve 30% of Land, Waters and Seas
	4	Halt Species Extinction, Protect Genetic Diversity, and Manage Human-Wildlife Conflicts
	5	Ensure Sustainable, Safe and Legal Harvesting and Trade of Wild Species
	6	Reduce the Introduction of Invasive Alien Species by 50% and Minimize Their Impact
	7	Reduce Pollution to Levels That Are Not Harmful to Biodiversity
	8	Minimize the Impacts of Climate Change on Biodiversity and Build Resilience
	9	Manage Wild Species Sustainably To Benefit People
	10	Enhance Biodiversity and Sustainability in Agriculture, Aquaculture, Fisheries, and Forestry
	11	Restore, Maintain and Enhance Nature's Contributions to People
	12	Enhance Green Spaces and Urban Planning for Human Well-Being and Biodiversity
	13	Increase the Sharing of Benefits From Genetic Resources, Digital Sequence Information and Traditional Knowledge
	14	Integrate Biodiversity in Decision-Making at Every Level
	15	Businesses Assess, Disclose and Reduce Biodiversity-Related Risks and Negative Impacts
	16	Enable Sustainable Consumption Choices To Reduce Waste and Overconsumption
	17	Strengthen Biosafety and Distribute the Benefits of Biotechnology
	18	Reduce Harmful Incentives by at Least \$500 Billion per Year, and Scale Up Positive Incentives for Biodiversity
	19	Mobilize \$200 Billion per Year for Biodiversity From all Sources, Including \$30 Billion Through International Finance
	20	Strengthen Capacity-Building, Technology Transfer, and Scientific and Technical Cooperation for Biodiversity
	21	Ensure That Knowledge Is Available and Accessible To Guide Biodiversity Action
	22	Ensure Participation in Decision-Making and Access to Justice and Information Related to Biodiversity for all
	23	Ensure Gender Equality and a Gender-Responsive Approach for Biodiversity Action

\*To see the full description of the Global Biodiversity Framework 2050 Goals and targets, please see the [Global Biodiversity Framework here](#).



# Cities Biodiversity Index Indicators\*

1	Proportion of Natural Areas in the City
2	Connectivity Measures or Ecological Networks to Counter Fragmentation
3	Native Biodiversity in Built Up Areas (Bird Species)
4	Change in Number of Vascular Plant Species
5	Change in Number of Native Bird Species
6	Change in Number of Native Arthropod Species
7	Habitat Restoration
8	Proportion of Protected Natural Areas
9	Proportion of Invasive Alien Species
10	Regulation of Quantity of Water
11	Climate Regulation – Benefits of Trees and Greenery
12	Recreational Services
13	Health and Wellbeing – Proximity/Accessibility to Parks
14	Food Security Resilience – Urban Agriculture
15	Institutional Capacity
16	Budget Allocated to Biodiversity
17	Policies, Rules and Regulations – Existence of Local Biodiversity Strategy and Action Plan
18	Status of Natural Capital Assessment in the City
19	State of Green and Blue Space Management Plans in the City
20	Biodiversity Related Responses to Climate Change
21	Policy and/or Incentives for Green Infrastructure as Nature-based Solutions
22	Cross-sectoral and Inter-agency Collaborations
23	. Participation and Partnership: Existence of Formal or Informal Public Consultation Process Pertaining to Biodiversity Related Matters
24	Participation and Partnership: Number of Agencies/Private Companies/NGOs/Academic Institutions/International Organizations with which the City is Partnering in Biodiversity Activities, Projects and Programmes
25	Number of Biodiversity Projects Implemented by the City Annually
26	Education
27	Awareness
28	Community Science

\*To see the full description of the Cities Biodiversity Index indicators, please see the [Cities Biodiversity Index Handbook here](#).



# Mapping Biodiversity and Nature

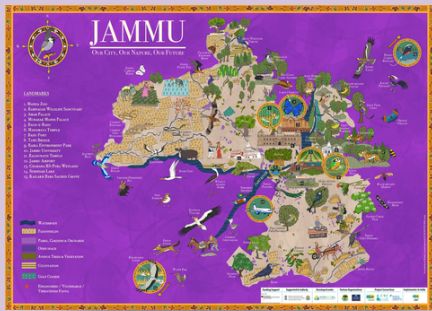
ICLEI USA can assist your community in developing maps of the biodiversity and natural areas within your community. We offer two types of mapping:

- Natural Asset Map
- Natural Resources Inventories (NRI)

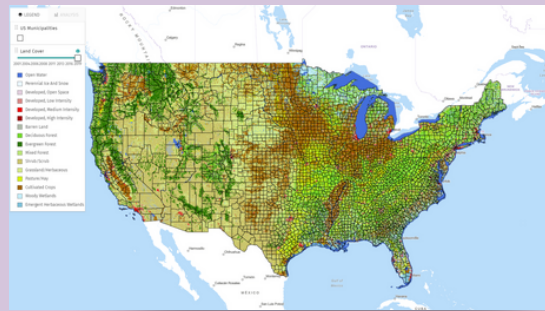
**A Natural Asset Map** focuses on the natural assets, land uses, ecosystem services, and major pressures to biodiversity in a city.

**A Natural Resources Inventory** dives into your community's physical resources, the resilience of your biodiversity, and culturally significant lands. We can support your community to create a comprehensive catalogue of these and more assets.

## Our Work



*ICLEI Africa's Natural Asset Maps -  
Jammu, India*



*Land Emissions And Removals Navigator  
(LEARN) Tool*

## Services & Costs

The rates listed are ICLEI USA member-preferred pricing. Non-members can fill out the request for a [quote form](#) to receive pricing information.

### Natural Asset Map (Tier 1) | \$6,500

ICLEI USA technical staff will work with community members to develop a map of the natural assets, land uses, ecosystem services, and major pressures to biodiversity. A map of the communities' natural assets will be developed by an illustrator.

### Natural Asset Map (Tier 2) | \$7,500

ICLEI USA technical staff will work with community members and collect publicly available data to develop a map of the natural assets, land uses, ecosystem services, and major pressures to biodiversity. A map of the communities' natural assets will be developed with GIS.

### Natural Resource Inventory | \$10,000

ICLEI USA technical staff collect data for the community's physical resources, water resources, wildlife habitats, resilience and culturally significant lands. A map of the communities' natural assets will be developed with ArcGIS StoryMap.



# Appendix J: Forest + Trees Outside of Forests Analysis

ICLEI USA published the Appendix J addition to the *U.S. Community Protocol* in 2019. This addition provides guidance to communities for estimating emissions and sequestration from forests and trees outside of forests (urban trees/street trees). In 2021, ICLEI USA, World Resources Institute, and Woodwell Climate Research Center developed the Land Emissions And Removals Navigator (LEARN) Tool to support communities with this analysis.

ICLEI USA can support your community in developing a forest and trees inventory with varying levels of detail, depending on your community's size and data availability.

## Services & Costs

The rates listed are ICLEI USA member-preferred pricing. Non-members can fill out the request for a [quote form](#) to receive pricing information.

### Appendix J/Forest + Trees Outside of Forests (Tier 1) | \$1,250

ICLEI USA technical staff will use the LEARN Tool to conduct the community's forest and trees outside of forest emissions and sequestration analysis. Tier 1 will include using a shapefile of the community's boundary to assess the emissions and sequestration.

### Appendix J/Forest + Trees Outside of Forests (Tier 2) | \$5,000

ICLEI USA technical staff will use the LEARN Tool to conduct the community's forest and trees outside of forest emissions and sequestration analysis. Tier 2 will include using a shapefile of the community's boundary to assess the emissions and sequestration as well as using the iTree Analysis tools to collect more accurate trees outside of forest estimates.



# Circular Services



*Fee-based opportunities to help local governments apply the best practices for circular economy and sustainable and innovative procurement.*



# Circular Economy and Sustainable and Innovative Procurement

The global economy consumes 100 billion tons of material annually to provide shelter, food, clothing, transportation, energy, and water to the 8 billion people living on our planet. This rate has more than doubled since 1990 and is projected to reach 190 billion tons by 2060. With fast-paced growth in consumption comes the degradation of natural resources and increasing greenhouse gas emissions, with an estimated 70% of global emissions tied to material handling and use. In addition to the environmental impacts of consumption, the world has seen an increase in the standard of living, life expectancy, and access to education (Human Development Index). However, an uneven distribution of these advances and consumption growth has led to inequities in human development. Global disparities in living standards and access to resources remain apparent through the United Nation's (UN's) Human Development Index (HDI) and calls to achieve the Sustainable Development Goals (SDGs). Disparities in the HDI and additional well-being indicators also exist within the US between metropolitan areas, urban populations, and more rural populations.

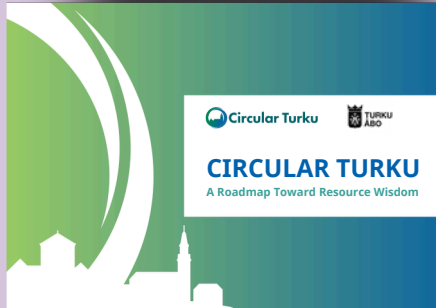
Through the development of the circular economy, communities can redistribute resources to drive smart and equitable consumption, resilience, climate action, and biodiversity conservation while offering the tools to support social equity, local job creation, public health, and community wealth. In practice, this means shifting away from the linear economy's "take, make, waste" model and moving to an economic system that maintains the value and utility of infrastructure, products, components, materials, and nutrients for as long as possible. ICLEI USA's Circular Pathway supports the transition to the circular economy by providing resources, best practice examples and guides, one-on-one technical assistance, and more. Our fee-for-service options focus on key areas of influence for local and regional governments in the transition to a more circular economy: Sustainable Public Procurement, Food Systems, and the Built Environment.





# Circular Economy and Sustainable and Innovative Procurement

## ICLEI Circulars' Work



*ICLEI's Circular Turku - A Roadmap Toward Resource Wisdom*

## Services & Costs

The rates listed are ICLEI USA member-preferred pricing. Non-members can fill out the request a [quote form](#) to receive pricing information.

### **Sustainable Public Procurement Policy Assessment w/ Recommendations | \$1,500**

ICLEI USA technical experts will review an existing sustainable procurement policy and provide recommendations for continual improvement, both policy-focused and procedural. This review may include an assessment of the tools used to monitor progress and interviews with procurers and departments.

### **Sustainable Public Procurement Policy Roadmap | \$5,000 - \$8,000\***

ICLEI USA technical experts will develop a roadmap to facilitate the adoption of a Sustainable Public Procurement policy or program. This may include defining the organization's procurement system, facilitating up to two staff training sessions, mapping and supporting engagement with stakeholders, assessing existing policies, defining the scope of the policy, and setting SMART targets. The roadmap will lay the foundations for the policy adoption process and will include a list of recommended actions to include in the policy. Key sectors to consider may include construction, information and technology, cleaning, food and catering, vehicles, and electricity.

### **Circular Built Environment Roadmap | \$5,000 - \$8,000\***

ICLEI USA technical experts will develop a roadmap to showcase your community's built environment transition through the circular pathway lens. Depending on your community's plans, this could include a focus on renewable energy recycling, bike or car share programs, sustainable infrastructure, and more.

### **Circular Food Systems Roadmap | \$5,000 - \$8,000\***

ICLEI USA technical experts will develop a roadmap to facilitate the transition to a more circular food system in a community or region. This may include defining the food system, mapping and supporting engagement with stakeholders, identifying interventions, and developing an implementation plan for the roadmap. Areas of focus may include addressing food waste, composting programs, regenerative agriculture, and more!

\*Fee may vary based on scope, level of effort required, and the availability of data.





# Equity-Building Services

*Fee-based opportunities to help your community advance justice, increase community engagement, and follow a people-centered pathway.*

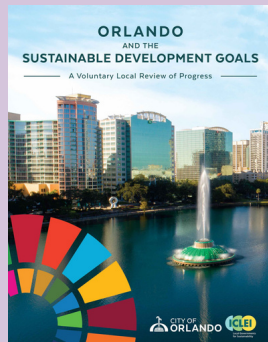


# Getting Started With Equity

Cities, towns and counties are vibrant hubs where people live, work, and play. They are also sources of community expertise and cultural heritage. As local governments address climate change by mitigating emissions and adapting to impacts, both climate equity and climate justice need to be core features of climate action. In every municipality, there are community members who will disproportionately experience the brunt of climate change, normally described as frontline or disadvantaged communities. These communities often face historical inequities while also being the most at risk for negative climate change impacts. When developing integrated climate action plans and sustainability plans, special focus needs to be placed on frontline communities to ensure that these inequities are resolved and not worsened by climate change.

**To address inequities in your community, you need to start by determining where the disadvantaged areas in your community are and what are the inequities they face. ICLEI USA offers two assessments to help local governments determine these inequities and align their programming with the Justice40 initiative.**

## Our Work



*Orlando & the Sustainable Development Goals*  
A Voluntary Local Review of Progress

## Services & Costs

The rates listed are ICLEI USA member-preferred pricing. Non-members can fill out the [request for a quote form](#) to receive pricing information.

### Voluntary Local Review (VLR)

ICLEI USA experts will provide a structured process and expertise to help local governments assess their progress towards the UN Sustainable Development Goals through [Voluntary Local Reviews](#).

5 Goal Areas: \$10k

Up to 9 Goal Areas: \$12k

10+ goals: \$15k - 20k, depending on scoping



# ABOUT ICLEI USA

---

ICLEI is the first and largest global network of local and regional governments devoted to solving the world's most intractable sustainability challenges. ICLEI USA's standards, tools, and programs credibly, transparently, and robustly reduce greenhouse gas emissions, improve lives and livelihoods and protect natural resources in the U.S. communities we serve. Through a data-driven approach and focus on just and equitable communities, ICLEI USA and our network partners are working to keep 1.5 °C alive.



This work is licensed under a [Creative Commons Attribution-NonCommercial-NoDerivatives 4.0 International License](https://creativecommons.org/licenses/by-nc-nd/4.0/). It may not be used for any commercial purpose. Any non-commercial use of this material must provide attribution to ICLEI Local Governments for Sustainability USA.