



CONTACT US FOR A QUOTE

(510) 844-0699

ICLEI-USA@iclei.org

ICLEIUSA.org

ICLEI USA's Nature-Based Services



Fee-based opportunities to help your community advance nature-based solutions, enhance biodiversity, and connect people to nature's benefits.

ICLEI USA delivers high-quality products that build local government capacity and ensure long-term success. Unlike a traditional consultant, our work does not end when the final deliverables are submitted. We continue to support member communities and celebrate your successes so that others can follow your lead.

Integrating Nature into Your Community's Initiatives

Alongside the climate change crisis, communities are grappling with the biodiversity crisis. The loss of natural habitat, the challenges providing equitable access to nature and the ecosystem services to humans — **such as clean water, clean air, healthy food and medicines, carbon sequestration, environmental hazard protection** and much more — contribute heavily to the climate crisis.

Recognizing the urgency of this biodiversity loss — and building on **ICLEI's unique role as the United Nations focal point organization on cities and nature** — we want to help your community develop a plan that addresses nature conservation and biodiversity.

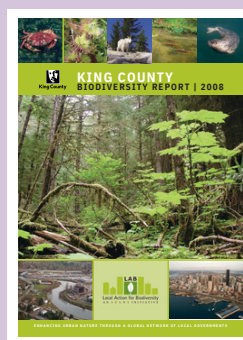
We support communities to:

- conserve natural areas in line with federal, state or local 30-by-30 initiatives and the America the Beautiful vision.
- sustain or improve biodiversity
- implement the Global Biodiversity Framework locally — or adapt a relevant indicator set of your own
- plan for an implement nature-based solutions and
- provide equitable access to nature for community members.

Our Work



*Land Emissions And Removals Navigator
(LEARN) Tool*



*Status of Biodiversity in
King County*





Cities Biodiversity Index

The Cities Biodiversity Index (CBI) allows cities to evaluate and monitor biodiversity within their city and any biodiversity conservation efforts. The CBI acts as a means to track “success metrics” for nature and includes a city profile to showcase your community’s physical features, biodiversity features, demographics, economic parameters, and more. The bulk of the CBI are the 26 indicators to track your community’s biodiversity.

ICLEI USA can support your community to develop a Cities Biodiversity Index of your own. We offer multiple options for levels of service and a flexible approach that can be customized to your community’s needs and resources.

Services & Costs

The rates listed are ICLEI USA member-preferred pricing. Non-members can fill out the request for a [quote form](#) to receive pricing information.

Cities Biodiversity Index (Tier 1) | \$7,500

ICLEI USA technical staff collect data for the indicators most relevant to the America the Beautiful Initiative and the Global Biodiversity Framework Targets 1-3. The CBI indicators covered under the CBI Tier 1 service are indicators 1, 7 and 8. This includes the proportion of natural areas in the community, habitat restored, and proportion of protected natural areas. The Cities Biodiversity Index Tier 1 service is best for an initial assessment of a community’s biodiversity and to incorporate into a sustainability plan.

Cities Biodiversity Index (Tier 2) | \$12,500

ICLEI USA technical staff collect data for the indicators most relevant Global Biodiversity Framework Targets 2, 3, 7, 11, 12 & 14 (includes CBI Indicators 1, 7, 8, 10, 11, 12, 13, 14, 16, 17, 22, 23, & 24). These Global Biodiversity Targets were designated as the most appropriate targets for local governments to achieve. The Cities Biodiversity Index Tier 2 service is best for communities interested in participating in the global movement for nature.

Cities Biodiversity Index (Tier 3) | \$18,750

ICLEI USA technical staff collect data for all Cities Biodiversity Indicators. The Cities Biodiversity Index Tier 3 service is best for communities interested in participating in the global movement for nature and ensuring nature is integrated in every aspect of its governance.



Global Biodiversity Framework*

2050 Goals	A	Protect and Restore
	B	Prosper with Nature
	C	Share Benefits Fairly
	D	Invest and Collaborate
Targets	1	Plan and Manage all Areas To Reduce Biodiversity Loss
	2	Restore 30% of all Degraded Ecosystems
	3	Conserve 30% of Land, Waters and Seas
	4	Halt Species Extinction, Protect Genetic Diversity, and Manage Human-Wildlife Conflicts
	5	Ensure Sustainable, Safe and Legal Harvesting and Trade of Wild Species
	6	Reduce the Introduction of Invasive Alien Species by 50% and Minimize Their Impact
	7	Reduce Pollution to Levels That Are Not Harmful to Biodiversity
	8	Minimize the Impacts of Climate Change on Biodiversity and Build Resilience
	9	Manage Wild Species Sustainably To Benefit People
	10	Enhance Biodiversity and Sustainability in Agriculture, Aquaculture, Fisheries, and Forestry
	11	Restore, Maintain and Enhance Nature's Contributions to People
	12	Enhance Green Spaces and Urban Planning for Human Well-Being and Biodiversity
	13	Increase the Sharing of Benefits From Genetic Resources, Digital Sequence Information and Traditional Knowledge
	14	Integrate Biodiversity in Decision-Making at Every Level
	15	Businesses Assess, Disclose and Reduce Biodiversity-Related Risks and Negative Impacts
	16	Enable Sustainable Consumption Choices To Reduce Waste and Overconsumption
	17	Strengthen Biosafety and Distribute the Benefits of Biotechnology
	18	Reduce Harmful Incentives by at Least \$500 Billion per Year, and Scale Up Positive Incentives for Biodiversity
	19	Mobilize \$200 Billion per Year for Biodiversity From all Sources, Including \$30 Billion Through International Finance
	20	Strengthen Capacity-Building, Technology Transfer, and Scientific and Technical Cooperation for Biodiversity
	21	Ensure That Knowledge Is Available and Accessible To Guide Biodiversity Action
	22	Ensure Participation in Decision-Making and Access to Justice and Information Related to Biodiversity for all
	23	Ensure Gender Equality and a Gender-Responsive Approach for Biodiversity Action

*To see the full description of the Global Biodiversity Framework 2050 Goals and targets, please see the [Global Biodiversity Framework here](#).



Cities Biodiversity Index Indicators*

1	Proportion of Natural Areas in the City
2	Connectivity Measures or Ecological Networks to Counter Fragmentation
3	Native Biodiversity in Built Up Areas (Bird Species)
4	Change in Number of Vascular Plant Species
5	Change in Number of Native Bird Species
6	Change in Number of Native Arthropod Species
7	Habitat Restoration
8	Proportion of Protected Natural Areas
9	Proportion of Invasive Alien Species
10	Regulation of Quantity of Water
11	Climate Regulation – Benefits of Trees and Greenery
12	Recreational Services
13	Health and Wellbeing – Proximity/Accessibility to Parks
14	Food Security Resilience – Urban Agriculture
15	Institutional Capacity
16	Budget Allocated to Biodiversity
17	Policies, Rules and Regulations – Existence of Local Biodiversity Strategy and Action Plan
18	Status of Natural Capital Assessment in the City
19	State of Green and Blue Space Management Plans in the City
20	Biodiversity Related Responses to Climate Change
21	Policy and/or Incentives for Green Infrastructure as Nature-based Solutions
22	Cross-sectoral and Inter-agency Collaborations
23	. Participation and Partnership: Existence of Formal or Informal Public Consultation Process Pertaining to Biodiversity Related Matters
24	Participation and Partnership: Number of Agencies/Private Companies/ NGOs/Academic Institutions/International Organizations with which the City is Partnering in Biodiversity Activities, Projects and Programmes
25	Number of Biodiversity Projects Implemented by the City Annually
26	Education
27	Awareness
28	Community Science

*To see the full description of the Cities Biodiversity Index indicators, please see the [Cities Biodiversity Index Handbook here](#).



Mapping Biodiversity and Nature

ICLEI USA can assist your community in developing maps of the biodiversity and natural areas within your community. We offer two types of mapping:

- Natural Asset Map
- Natural Resources Inventories (NRI)

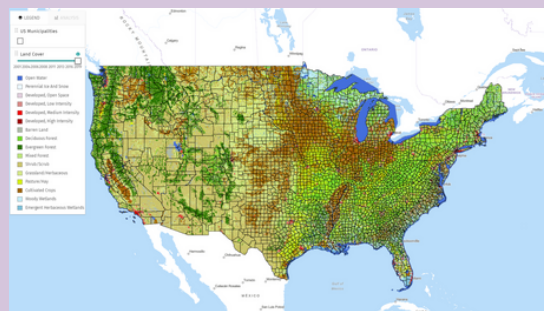
A Natural Asset Map focuses on the natural assets, land uses, ecosystem services, and major pressures to biodiversity in a city.

A Natural Resources Inventory dives into your community's physical resources, the resilience of your biodiversity, and culturally significant lands. We can support your community to create a comprehensive catalogue of these and more assets.

Our Work



*ICLEI Africa's Natural Asset Maps -
Jammu, India*



*Land Emissions And Removals Navigator
(LEARN) Tool*

Services & Costs

The rates listed are ICLEI USA member-preferred pricing. Non-members can fill out the request for a [quote form](#) to receive pricing information.

Natural Asset Map (Tier 1) | \$6,500

ICLEI USA technical staff will work with community members to develop a map of the natural assets, land uses, ecosystem services, and major pressures to biodiversity. A map of the communities' natural assets will be developed by an illustrator.

Natural Asset Map (Tier 2) | \$7,500

ICLEI USA technical staff will work with community members and collect publicly available data to develop a map of the natural assets, land uses, ecosystem services, and major pressures to biodiversity. A map of the communities' natural assets will be developed with GIS.

Natural Resource Inventory | \$10,000

ICLEI USA technical staff collect data for the community's physical resources, water resources, wildlife habitats, resilience and culturally significant lands. A map of the communities' natural assets will be developed with ArcGIS StoryMap.



Appendix J: Forest + Trees Outside of Forests Analysis

ICLEI USA published the Appendix J addition to the *U.S. Community Protocol* in 2019. This addition provides guidance to communities for estimating emissions and sequestration from forests and trees outside of forests (urban trees/street trees). In 2021, ICLEI USA, World Resources Institute, and Woodwell Climate Research Center developed the Land Emissions And Removals Navigator (LEARN) Tool to support communities with this analysis.

ICLEI USA can support your community in developing a forest and trees inventory with varying levels of detail, depending on your community's size and data availability.

Services & Costs

The rates listed are ICLEI USA member-preferred pricing. Non-members can fill out the request for a [quote form](#) to receive pricing information.

Appendix J/Forest + Trees Outside of Forests (Tier 1) | \$1,250

ICLEI USA technical staff will use the LEARN Tool to conduct the community's forest and trees outside of forest emissions and sequestration analysis. Tier 1 will include using a shapefile of the community's boundary to assess the emissions and sequestration.

Appendix J/Forest + Trees Outside of Forests (Tier 2) | \$5,000

ICLEI USA technical staff will use the LEARN Tool to conduct the community's forest and trees outside of forest emissions and sequestration analysis. Tier 2 will include using a shapefile of the community's boundary to assess the emissions and sequestration as well as using the iTree Analysis tools to collect more accurate trees outside of forest estimates.



ABOUT ICLEI USA

ICLEI is the first and largest global network of local and regional governments devoted to solving the world's most intractable sustainability challenges. ICLEI USA's standards, tools, and programs credibly, transparently, and robustly reduce greenhouse gas emissions, improve lives and livelihoods and protect natural resources in the U.S. communities we serve. Through a data-driven approach and focus on just and equitable communities, ICLEI USA and our network partners are working to keep 1.5 °C alive.



This work is licensed under a [Creative Commons Attribution-NonCommercial-NoDerivatives 4.0 International License](https://creativecommons.org/licenses/by-nc-nd/4.0/). It may not be used for any commercial purpose. Any non-commercial use of this material must provide attribution to ICLEI Local Governments for Sustainability USA.