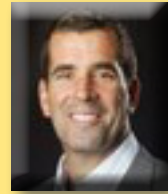


2014 Annual Report



From the Executive Director



2014 was a breakthrough year for local climate action and sustainability. And ICLEI was a catalyst - forging alliances and partnerships, building capacity and creating opportunity.

City climate leadership took center stage in 2014, and ICLEI is proud to have been a key part of making this a reality. From the UN Climate Summit in New York to the global negotiations in Lima, Peru, the role of city action in reducing CO₂ emissions was at the top of the agenda at every venue. The watershed climate accord between China and the US highlighted city action as a key part of the ambitious action plan of the world's two largest carbon polluters, and the President's Task Force on Local Preparedness outlined a detailed path forward for scaling up local impact.

Success at the local level is a result of smart strategies and hard work by local leaders. The hundreds of local government members of ICLEI USA are driving this success across the country, showcasing bold, innovative and effective approaches to building resilience and creating climate opportunity. ICLEI has achieved continued success by focusing on results, creating pathways to solutions, and scaling impact. Partnering with other city networks and technical leaders is a key part of ICLEI's strategy to increase local impact. These partnerships led to many of the major breakthroughs for local action in 2014, including the launches of the Compact of Mayors; the GPC, the global technical standard for emissions measurement; and the carbonn Climate Registry, the world's largest database on local and subnational climate action.

We continue to focus on helping local leaders build capacity and increase effectiveness. To critical acclaim and widespread adoption, we launched our path-breaking emissions management software ClearPath as the centerpiece of the Climate Path-



CalEPA Secretary Matthew Rodriguez (left) and ICLEI USA Executive Director Michael Schmitz (right) together on a trade mission to China in the first step of the development of a California-China Urban Climate Collaborative.

ways program designed to scale up local action to the many hundreds of communities embarking on the path to a low carbon future. ICLEI continued to play the role of implementation lead for the US Department of Energy's Solar Outreach Partnership program (SolarOPs) designed to dramatically increase deployment of solar energy through local governments, as well as driving forward California's path-breaking Statewide Energy Efficiency Collaborative (SEEC) program.

Our continued success in 2014 would not have been possible were it not for the generous support of our funders, engagement of our partners, and the dedication of the Board and staff of ICLEI USA. For all you have done to advance the mission of a healthier, cleaner, and more resilient future – thank you!

The spotlight now shines on city leaders because the world needs more than good intentions. The world needs to know that ideas can be turned into action, that the strategies employed are the most effective, and that successful pilots can be scaled massively. 2015 holds great promise as *the year for results* on city climate leadership and ICLEI stands ready to help local leaders deliver them.

Sincerely,



Michael J. Schmitz,
Executive Director, January 2015

2014 in Review



ICLEI and partners at the Climate Summit 2014

ICLEI trained and provided technical assistance to over **275** local governments in **30** states on emissions management with ICLEI’s new **ClearPath** platform for emissions monitoring and tracking

- > President’s Task Force on Climate Preparedness and Resilience requests ICLEI member elected officials and Resilient Communities for America (RC4A) signatories to crowdsource policy insights.
- > Second Nature partnered with the ICLEI’s RC4A Campaign to strengthen college leadership in resilience.
- > ICLEI and Office Depot award four cities with \$20,000 each in resources and technical support to strengthen green business practices.
- > ICLEI partnered on the Compact of Mayors and other bold initiatives at the Climate Summit 2014.
- > 100% RE initiative and ICLEI signed an agreement to jointly facilitate and foster the progress towards 100% renewable energy among local governments.
- > ICLEI’s carbon_n named as the Resilient Communities for America’s official reporting platform for Local Climate Action.
- > With partners, ICLEI’s Solar Outreach Partnership provides a solar strategy for Detroit, MI.
- > ICLEI, the World Resources Institute (WRI), and C40 Cities Climate Leadership Group launched the first widely endorsed global standard for cities to measure and report their greenhouse gas emissions at COP20.
- > Los Angeles released its Sea-Level Rise Vulnerability Study prepared by ICLEI and USC SeaGrant.
- > ICLEI launched Climate Pathways to help cities tackle carbon pollution.



Participants in the US-Japan Adaptation Exchange tour restoration projects at the Tijuana Estuary

Following the prior year’s meeting in Tokyo, in early 2014 ICLEI hosted a policy exchange focused on climate adaptation between the cities of San Diego, Philadelphia, Tokyo Metropolitan Government, and two special wards from the Tokyo metropolitan region (Sumida and Edogawa). The meeting included presentations from leading researchers, planners, and resource managers. Facilitated dialogue centered on strategies for:

- > Fostering decision-making for advancing adaptation
 - > Disaster risk reduction
- > Hazard mitigation planning for climate preparedness

Cities around the globe are facing similar challenges and looking to implement the best global practices for sustainability and resilience.

With 18 offices on 6 continents, ICLEI is uniquely able to connect its 1,000+ members for peer exchange and shared learning, and more engagements are on the horizon for 2015.

Membership Highlights

2014 was a banner year for ICLEI local governments through the use of ICLEI’s tools, resources, technical assistance and exchange of best practices.



- > More than 350 local governments and regional agencies are using ClearPath to measure, plan for, and monitor carbon pollution through membership and State-level partnerships.
- > Three regional agencies helped support over 50 individual communities by managing climate data in ClearPath.
- > Nearly 40% of the quarterfinalists in the Georgetown University Energy Prize were ICLEI members.

In 2014 fourteen ICLEI members were awarded a range of Milestone Awards based on ICLEI’s Five Milestones to Emissions Management.

MILESTONE	1	Conduct a baseline emissions inventory	Corvallis, OR; Ithaca, NY (Comm), Moscow, ID; Wellesley, MA
	2	Adopt an emissions reduction target	Wellesley, MA
	3	Develop and Adopt a Local Climate Action Plan	Bowie, MD; Missoula, MT; Pinecrest, FL
	4	Implement policies and measures	Bridgeport, CT; Beaverton, OR; Ithaca, NY (LGO), Tompkins County, NY; Dubuque, IA; Summit Country, UT
	5	Monitor and verify results	Bridgeport, CT; Aspen, CO; Tompkins Country, NY; Tallahassee, FL; West Chester Borough, PA; Eugene, OR

ICLEI members gain...

RESULTS

A select group of ICLEI members completed baseline and most recent community inventories in ClearPath, which demonstrated an estimated 4.7 million metric ton reduction in CO_{2e}.

4,700,000

metric ton reduction in CO_{2e}

=

990,856

cars off the road for a year

or

1.2

coal-fired power plants shutting down

TECHNICAL ASSISTANCE

ICLEI’s member support team provided direct technical assistance to over 75% of our membership base with hundreds of questions ranging from mitigation, adaptation, and resiliency, to energy efficiency, solar, and our Green Business Challenge.

EXCLUSIVE WEBINARS

ICLEI will continue the Members’ Only Webinar Series in 2015 as a core member benefit to highlight innovation and encourage the exchange of best practices across the United States. We look forward to kicking off the 2015 series with the cities of Houston, TX; Cupertino, CA; West Palm Beach, FL; Lexington, KY; and Charlottesville, VA, and sharing the experiences and successes of their respective Green Business programs.

For additional membership information, contact J.R. Killigrew, Senior Program Officer & National Membership Coordinator at jr.killigrew@iclei.org or +1 (510) 844-0699 ext.309.

Program Highlights from 2014

In 2014 ICLEI successfully launched...



all-in-one online solution for GHG inventory,
forecasting, and action planning

ICLEI proudly continues to support and partner on...



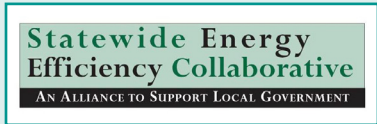
Resilient Communities
for America (RC4A)



Solar Outreach Partnership,
a U.S. Department of Energy
SunShot Initiative



Climate Pathways



Statewide Energy
Efficiency Collaborative (SEEC)



carbonn
Climate Registry



Green Business
Challenge

CLEARPATH AND CLIMATE PATHWAYS

2014 marked a major step forward for the field of local greenhouse gas emissions management with the national launch of ICLEI's ClearPath online emissions management tool. ClearPath provides significantly more powerful analytical capabilities than previously available tools by seamlessly linking data from emissions inventories to forecasts, planning, implementation, and monitoring progress over time. Complementing ClearPath is the comprehensive Climate Pathways program, which provides guidance, training, technical assistance, and leadership recognition to local governments.

Only nine months after the national launch, ClearPath is already in use by over 350 local governments. These local governments have used the tool to create:

349 inventories of government operations greenhouse gas emissions

507 inventories of community-wide greenhouse gas emissions

302 forecasts of future emissions, in the absence of reduction actions

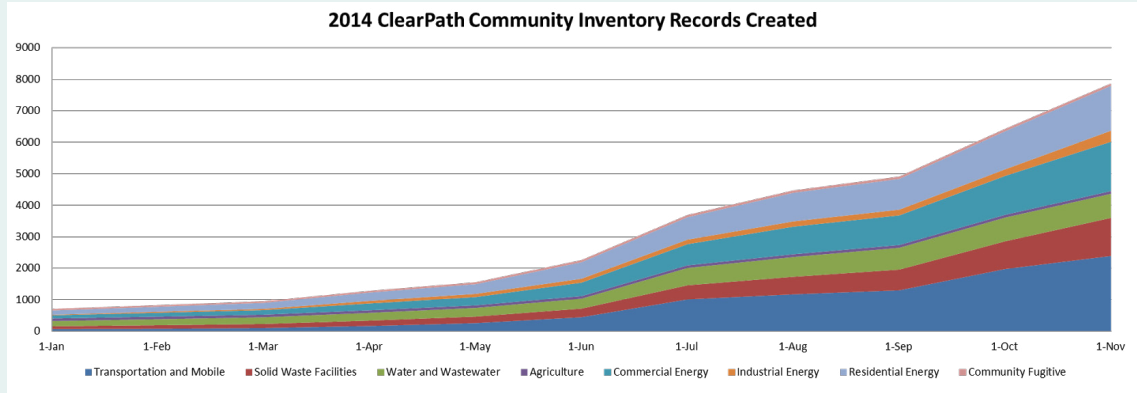
181 climate action planning scenarios

740 records for specific actions to reduce emissions

"ClearPath provides a major improvement over the previous tool and **increased functionality for our carbon emissions tracking and planning work**. We appreciate ICLEI's efforts to evolve in a way that serves the needs of a broad user group. We continue to see ICLEI as the leader on emissions tracking tools and planning support."

– Alex Dews, Former Policy & Program Manager, Philadelphia, PA

Exponential Growth in Community Records Created in ClearPath



“This is the software we have been hoping for! With a web-based platform, **ClearPath** addresses several key challenges for local governments in tracking GHG emissions: keeping inventory software updated with protocol updates, providing a safe repository for data and software through computer upgrades and staff transition, and allowing for smooth and efficient technical support. The interface is user friendly, the graphics are clear, and the ability to export the reports and graph images will make inventory preparation much more efficient. We look forward to utilizing the forecasting and planning component, and **feel more confident in creating, evaluating, and communicating planning scenarios and policy options utilizing ClearPath.**”

– Kathy Jack, Sustainability Coordinator, Denton, TX

“**ClearPath** has allowed the City of Monterey to inventory our emissions in a comprehensive, reliable way, employing both the Local Government Operations and U.S. Community Protocol. The built-in calculators and helpers in ClearPath make quick work of what can be a daunting set of conversions and equivalencies. ICLEI has been a strong partner for the City of Monterey as we work to finalize our Climate Action Plan and implement a wide-ranging suite of measures at the government and community level to reduce our carbon footprint.”

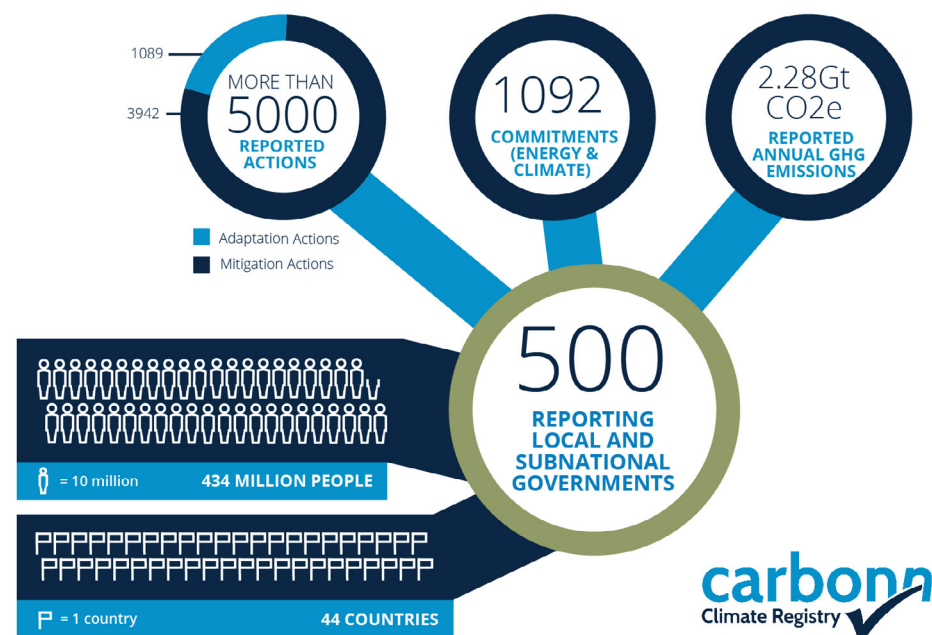
– Ted Terrasas, Sustainability Coordinator, Monterey, CA

“The dynamic charts are a powerful tool to use during public meetings. . . The user interface is modern and intuitive. . . **ClearPath helps us zero in on strategies that can achieve an impact.**”

– Scott Tess, Sustainability Manager, Urbana, IL

CARBONN CLIMATE REGISTRY

Developed in collaboration between ICLEI, C40, and UCLG, the **carbonn Climate Registry (cCR)** was designated as the central repository of the Compact of Mayors at the Climate Summit 2014. This world-leading reporting platform will enhance transparency, accountability, and credibility of the climate actions of local and subnational governments.



GREEN BUSINESS CHALLENGE

Launched in 2009 in Chicago, the **Green Business Challenge** is a streamlined national public-private partnership model for communities interested in using friendly competition to drive private sector awareness and engagement in local government sustainability priorities. The Green Business Challenge offers a city standards and a framework by which it can customize its own competition with toolkits to help support the local government and participating businesses, including templates, scorecards, marketing materials, and a guide book; trainings for participating local businesses; a network of other Green Business Challenge cities where knowledge and best practices can be shared; third-party vendor resources in the form of a web platform to host the challenge; dedicated ICLEI staff to help support the local government; and national recognition and promotion. More than 20 cities have taken the challenge, with additional cities to join in 2015.

2014 Green Business Challenge achievements for Charlottesville, VA

78 businesses, schools, and churches participated

450+ actions were taken

1,554,117kWh of electricity will be saved per year as a result of participant actions

202 tons of waste will be diverted yearly through participant recycling and composting

1,823 tons of CO₂ emissions avoided yearly due to energy and waste reductions, equivalent to taking 4,279 cars off the road

4,545,380 gallons of water will be saved each year due to water-efficient fixtures and drought-tolerant plants

\$184,645 USD will be saved each year in electricity and water costs



Awardees from the Charlottesville Better Business Green Awards



Charlottesville Better Business Green Awards Night



Awardees from the Charlottesville Better Business Green Awards

In June of 2013, Houston, TX; West Palm Beach, FL; Cupertino, CA; and Lexington, KY were awarded with Office Depot Implementation Packs valued at \$20,000 each, which included in-kind contributions, software, and technical assistance to help create and/or enhance an existing business challenge in their community. This latest group of cities builds on a successful five-year public-private partnership between ICLEI and Office Depot. More information on successes and how to participate can be found at icleiusa.org/climate_and_energy/green-business-challenge.

RESILIENT COMMUNITIES FOR AMERICA CAMPAIGN

One year ago, in the aftermath of record-breaking tornadoes and severe storms in the Midwest, a group of leading mayors and local officials convened to express their commitment to strengthen their response to an era of extreme climate weather. The 45 Inaugural Signatories of the **Resilient Communities for America** (RC4A) campaign represented a burgeoning movement of local leaders who saw that—in a new age of rapid change and disruption—our communities must be better prepared and built to flourish in the face of emerging challenges. Today, this movement has expanded to more than 200 local officials that have pledged their commitment to building more resilient communities—Republicans and Democrats alike from big cities to small towns in every region and across the country—and the momentum continues to grow.

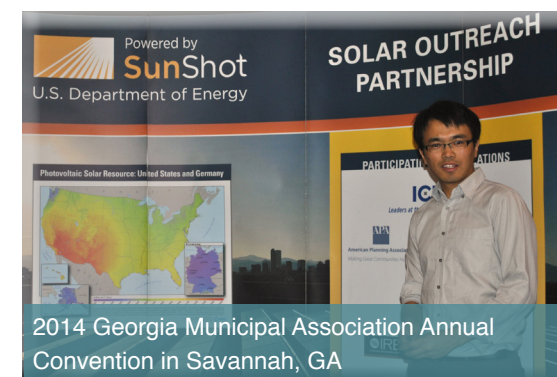
RC4A has created opportunities for local elected officials to be heard in national policy, including through the Local, State, and Tribal Task Force on Climate Resilience created by and reporting to President Obama. When the Task Force was formed, more than two-thirds of the local officials selected were RC4A Signatories. In addition, ICLEI supported the Task Force by serving as a channel to gather recommendations from nearly 100 local elected officials and staff members. Task Force members delivered their Resilience Recommendations to President Obama in November 2014.

In September, RC4A took another step forward by naming the internationally recognized carbon reporting platform as the official platform for signatories to share information about their climate resilience and clean energy actions and performance. RC4A has laid a strong foundation for continued outreach and advocacy in the year ahead, and we congratulate the network of committed leaders who are sparking change and paving the way for a more resilient and prosperous future.

SOLAR OUTREACH PARTNERSHIP

ICLEI USA is a lead implementation partner for the U.S. Department of Energy's **Solar Outreach Partnership** (SolarOPs) program, designed to dramatically increase deployment of solar energy by providing resources to reduce soft cost barriers. The program addresses issues such as solar permitting & inspection, interconnection policies, community solar, and solar financing. Through energy advocacy and education, ICLEI helps its members promote renewable energy as a strategy to create resilient communities and strengthen local economies.

ICLEI USA is the lead on offering complimentary technical assistance through SolarOPs, delivering support for local governments. This assistance is designed to help cities and counties remove barriers in local markets and increase installed solar capacity. Examples of technical assistance opportunities include: incorporating solar energy use into comprehensive plans, identifying local solar financing options, procuring solar energy systems for municipal facilities, and streamlining solar permitting processes. To date, there have been 35 ongoing and completed technical assistance engagements in states including: California, Georgia, Maine, Nebraska, and South Carolina.



2014 Georgia Municipal Association Annual Convention in Savannah, GA



Detroit solar strategy session



"The added value of SolarOPs was having a fresh look from an outside agency to look at what we were proposing and see if it was clear and if it made sense. It **really helped us to understand and make sure we had the correct language**.

– Brian Coates, Planner III - Wake County Long Range Planning, Wake County, N.C.



"It was **a great thing to be able to bring in national experts** who could talk about some of the barriers that currently exist related to this topic area and who could speak credibly about the best practices to streamline or remove those barriers."

– Nina Orville, Principal, Abundant Efficiency, Westchester County, N.Y.



"A lot of our local government players and city administrators didn't even have, or had considered, solar as being needed to be addressed. **Showing them the good examples of how solar can fit in with the urban and rural landscape was the most impactful.**"

– Jessica Hill, Senior Planner – Sustainability, Centralina Council of Governments, N.C.



ICLEI continues to provide...

SPECIALIZED TRAINING

A key part of ICLEI's approach is empowering local government staff with the knowledge to manage greenhouse gas emissions. In-person trainings are particularly effective for this, and through our partnership with the State of California and its investor-owned utilities.

In California, ICLEI's training included...

181 local governments supported

14 local councils of government and regional agencies
that represent almost half of California's population

179 attendees at in-person field trainings in **10** regions

INNOVATION IN CLIMATE PREPAREDNESS

ICLEI continues innovating in how local governments can prepare for climate change through a pilot project in hazard mitigation planning in the San Diego region, in partnership with the San Diego Foundation and the Scripps Institute of Oceanography. Hazard mitigation planning is commonly carried out by local governments across the country to reduce risks and potential damage from natural disasters and man-made events. ICLEI engaged planners and stakeholders in the San Diego region in a series of three workshops to help them include climate change risks in this planning. The lessons from this pilot will help in our efforts to make planning and preparation for climate change impacts part of the normal function of local governments nationwide.

Looking Forward

2014 has been another remarkable year for ICLEI. We offered a multitude of projects and events that promoted sustainable growth in our communities; enriching the engagement and cooperation between partners; and the exchange between local governments, businesses and global policy makers. We have continued to make great progress in helping local governments to promote and develop sustainability initiatives.

Increasing public awareness concerning climate change, growing urbanization and the ongoing climate events that remind us of our choices as stewards to planet Earth are key to creating positive momentum in 2015. This momentum offers great promise for the COP21 in Paris and the finalization of the Sustainability Development Goals (SDGs), both taking place in 2015.

We look forward in particular to the ICLEI World Congress 2015, taking place in Seoul, Korea on April 8-12. The Congress will be a landmark gathering of world leaders in urban sustainability. Cities from every region will gather to share ideas and to learn from each other, with the goal of demonstrating that a transition to a low carbon, vibrant and resilient future is achievable. For additional details on the event, visit iclei.org/worldcongress2015.

**We very much welcome your continued support
in making 2015 a successful year of collective
local action for sustainability!**

– Gino Van Begin, Secretary General, ICLEI

CLEAR PATH

We will continue to add new features and improve **ClearPath** in 2015, including:

- > A link to allow automatic reporting to the carbonn Climate Registry
- > More planning calculators
- > More formatted reports
- > Improved functionality for reporting following the Global Protocol for Communities (GPC)

In addition, we will roll out more support for communities to use, including:

- > Launching an online community to facilitate questions and answers and peer knowledge sharing on the use of ClearPath, data collection and availability, protocols and standards, and other topics related to completion of the Five Milestones
- > Producing additional online on-demand recorded trainings



Efficiency while also co-leading the District Energy Accelerator.

SUSTAINABLE ENERGY FOR ALL (SE4ALL)

At the UN General Assembly in September 2014, **Sustainable Energy for All (SE4All)** formally launched their Energy Efficiency Accelerator to drive action and commitments by national and sub-national leaders at the country, state, city, region, and sector level in order to achieve the goal of doubling the global rate of energy efficiency by 2030. ICLEI is partnering in this effort and playing a contributing role in the work of the Building

SUSTAINABLE PUBLIC PROCUREMENT

As a continuation of ICLEI's sustainable public procurement work, the City of Seoul and ICLEI plan to launch a Global Lead Cities Network on **Sustainable Public Procurement (SPP)** at the ICLEI World Congress in 2015. This network of leading cities will promote SPP globally and help drive the transition to sustainable production and consumption. One leading city in each of ICLEI's regions will be invited to join the global founders network, with additional cities added by invitation.

CALIFORNIA-CHINA URBAN CLIMATE COLLABORATIVE

The California-China Urban Climate Collaborative (CCUCC) is designed to build a dynamic long-term exchange between cities in California and China seeking to reduce carbon and air pollution and advance the clean energy economy. ICLEI, in partnership with the Lawrence Berkeley National Laboratory, the California-China Office of Trade and Investment, the Bay Area Council and the Asia Society, will assist policy makers in climate action planning, build organizational capacity for climate action planning, and connect cleantech industries with cities. We are preparing for the formal launch of the CCUCC in 2015.

In 2014, ICLEI USA tools and experience developing GHG protocols were presented to Chinese officials from the National Center for Climate Change Strategy and International Cooperation, and National Development and Reform Commission at the Energy Foundation's workshop for low-carbon development planning tools in Beijing. The Collaborative was also presented at the China-California joint side-event at China Pavilion during the United Nations Conference of Parties 20 (COP20) in Lima as a model of the sub-national climate collaboration. We look forward to building this vital collaboration between Chinese and Californian local leaders on climate action throughout 2015.



GREEN BUSINESS CHALLENGE

With the success that **Green Business Challenge** has seen in 2014, the focus of 2015 will be to scale-up activities. Ongoing discussions are taking place with several potential private sector and nonprofit partners, and there are ongoing discussions with Office Depot on how to create a greater impact by focusing on larger cities moving forward in 2015.

A new Challenge is already on the horizon for this year. On January 29, 2015 Cupertino, CA launched their Challenge in support of California's Green Business Program. Cupertino will be targeting over 200 small-to-medium sized businesses, as well as some of the larger businesses that call Cupertino home.

URBAN CLIMATE EQUITY

A critical but difficult part of the sustainability planning process is effective community engagement; ICLEI's **Urban Climate Equity** initiative intends to address this necessary element of effective planning. Building from ICLEI's successful model of tools and technological assistance, this program will build off of its Five Milestones of Sustainability to empower impacted communities to become more resilient. The key objectives of the program include:

- > Vulnerability assessments to gauge a community's ability to cope with the changing environment through a combination of modeling, mapping, and intensive consultation with local stakeholders.
- > An opportunity analysis that identifies strategies to revitalize and financially empower vulnerable communities by mobilizing self-sustaining public-private partnership structures using a market-based approach.
- > Extensive capacity building in affordable housing settings at the housing authority, neighborhood, building manager, and resident level via technical assistance, tools and resources.

To support our launch and growth of these ground-breaking initiatives, please contact:
Angie Fyfe, Renewable Energy Program Director at angie.fyfe@iclei.org, (202) 800-0304 or
Brian Holland, Climate Programs Director at brian.holland@iclei.org, (415) 734-0653

Board of Directors

The ICLEI USA Board of Directors is a body of local leaders from across the country. The Board helps drive the organization strategically and ensures that ICLEI’s value to its local government members continues to meet and exceed expectations. We extend our deepest appreciation to our Board of Directors:

CHAIR OF THE BOARD
Valerie Brown
Former Supervisor
Sonoma County, CA

PRESIDENT
Jeb Brugmann
ICLEI Founder
Sustainability Strategist

FIRST VICE PRESIDENT
Pegeen Hanrahan
Former Mayor
City of Gainesville, FL

TREASURER
Salud Carbajal
District Board of Supervisors
Santa Barbara County, CA

SECRETARY
Michael Schmitz
ICLEI USA Executive Director

Frank Cownie
Mayor, Des Moines, IA

Pam O’Connor
City Councilmember, Santa Monica, CA

Michael A. Nutter
Mayor, Philadelphia, PA

Henrietta Davis
Former Mayor, Cambridge, MA

Patrick Henry Hays
Former Mayor, North Little Rock, AR

Harvey Ruvin
Clerk of the Courts, Miami-Dade County, FL

ICLEI USA STAFF

Michael Schmitz
Executive Director

Monica Gilchrist
Deputy Executive Director

PROGRAMS
Riana Ackley
Renewable Energy Program Officer

Daren Cheatham
Program Officer

Angie Fyfe
Resource Efficiency and Renewable Energy Program Director

Brian Holland
Climate Programs Director

J.R. Killigrew
Sr. Climate Program Officer, National Membership Coordinator

Dawna Liang
Senior Finance Officer

Saharnaz Mirzazad
Policy Associate

Celina Plaza
Communications Officer

Mike Steinhoff
Tools and Technical Innovation Manager

Gina Stovall
Tools and Technical Innovation Associate

Chad Tudenggongbu
Renewable Energy Program Officer

Eli Yewdall
Sr. Climate Program Officer

ICLEI NORTH AMERICA REGIONAL EXECUTIVE COMMITTEE

GEXCOM REP
Frank Cownie
Mayor, Des Moines, IA

CHAIR
Pam O’Connor
City Councilmember, Santa Monica, CA

VICE-CHAIR
Matthew Appelbaum
Mayor, Boulder, CO

Mark Brostrom
Director, City Environmental Planning, Sustainable Development, Edmonton, Canada

Cindy Toth
Director of Environmental Policy, Town of Oakville, Canada

We would like to thank our members, funders and partners for another successful year!

2014 ICLEI USA FUNDERS AND PARTNERS

A Better City
Alliance to Save Energy
America’s PreparAthon!
American Council for an Energy-Efficient Economy
Asia Society
Association of Climate Change Officers
Better World Group
C40 Cities Climate Leadership Group
California Air Resources Board
California China Office of Trade & Investment
Bay Area Council
California Governor’s Office of Planning and Research
California’s Investor Owned Utilities under the auspices of the California PUC
Cambridge Institute of Sustainability / ClimateWise
Ceres
ecoAmerica
FEMA
Garret Albright
Green Business Engagement National Network
Green Per Square Foot
GreenBiz/VERGE
International City/County Management Association
Institute for Local Government
Interstate Renewable Energy Council
Lawrence Berkeley National Laboratory
Local Government Commission
Marisla Foundation
Mayors Innovation Project
Meister Consultants Group
National League of Cities
National Renewable Energy Laboratory
National Wildlife Federation
North Carolina State University
Office Depot

Pacific Gas & Electric Company
Rooftop Solar Challenge II Teams
San Diego Foundation
Schneider Electric
Stopwaste.org
The Kresge Foundation
The Next Practice
The Solar Electric Power Association
The Solar Foundation
Thomas & Mary Schmitz Trust
Turner Foundation
U.S. Department of Energy
United Nations - Sustainable Energy for All
US Green Building Council
World Resources Institute
World Wildlife Fund
YR&G

2014 Resources and Publications

CLIMATE CHANGE AND RESILIENT COMMUNITIES FOR AMERICA

Climate Extremes Communication Guide

A resource to help local governments communicate about weather and climate extremes in the context of climate change.
<http://www.icleiusa.org/library/documents/extreme-weather-guidebook-1>

Resilient Communities for America Federal Policy Initiative

Recommendations to the President’s Task Force on Climate Preparedness and Resilience
<http://www.icleiusa.org/library/documents/rc4a-federal-policy-initiative-report-5.12.14>

Resilient Communities Series Case Studies

Lessons in Sustainability from Members of the President’s Task Force on Climate Preparedness and Resilience
http://www.icleiusa.org/climate_and_energy/Climate_Adaptation_Guidance/presidents-task-force-policy-initiative-1

Primer on Integrating Hazard Mitigation and Climate Adaptation

Case Studies and Lessons Learned for the 2015 San Diego County Multi-Jurisdictional Hazard Mitigation Plan
<http://www.icleiusa.org/library/documents/integrating-hazard-mitigation-and-climate-adaptation-planning/>

ClearPath Online Training Modules (16)

ICLEI offers regular trainings to help local government staff quickly learn the fundamentals of climate action planning, including how to compete a greenhouse gas emissions inventory, set GHG reduction targets, and use our tools to develop a targeted climate action plan. <http://www.icleiusa.org/training-events/recorded-trainings/skills-training>

ClearPath Inventory Module Users Guide

This user guide covers the greenhouse gas inventory module of the application. The Inventory Module provides the basis for all greenhouse gas management activities done in the application, allowing the user to perform inventories consistent with the Local Government Operations Protocol and the US Community Protocol. The greenhouse gas inventory provides the basis for long-term emissions forecasting, which in turn provide the basis for the development of Climate Action Plans.

ClearPath Forecasting Module Users Guide

This user guide covers the greenhouse gas forecasting module of the application. A forecast begins with the results of a greenhouse gas inventory and creates projections of emissions trends based on anticipated demographic and economic changes. Forecasts provide the basis for the development of Climate Action Plans.

ClearPath Planning Module Users Guide

This document supports the use of the ClearPath Planning module for climate action planning in two ways. First it provides an over-view of some of the essential challenges with creating a climate action plan and describes approaches that can be used to address those issues by undertaking an analysis that will lead you to the right combination of measures for your community to reach its climate protection goals. The second half of this document introduces the Climate Action Planning Assistant (CAPA) functions of ClearPath.

SOLAR OUTREACH PARTNERSHIP

REPORTS AND CASE STUDIES:

Community Shared Solar: Expansions Underway in Solar America Communities

This report provides an overview of the status of community shared solar projects in Solar America Communities as of September 2014, as well as some of the differences and similarities between the creation and structure of these programs.
<http://solaroutreach.org/wp-content/uploads/2014/11/Community-Solar.pdf>

Solar Group Purchasing: Frederick County

This case study details Solarize Frederick County, a group purchasing program that ran from April to August 2013 in Frederick County, Maryland. <http://solaroutreach.org/wp-content/uploads/2014/07/Solarize-Frederick-71814.pdf>

WEBINARS:

Solar for All: Minimum Costs to Local Governments and Maximum Solar for their Communities

Featuring the city of Beaverton, Oregon’s Solar on Reservoirs project, and Tompkins County, New York’s Solarize program.
<http://solaroutreach.org/resource/solar-minimum-costs-local-governments-maximum-solar-communities/#.VluAFCvF-Ig>

Solar Permitting and Inspection Series

Series of three webinars that reviewed the components of rooftop solar permitting processes, and shared best practices and tools for improving them. <http://solaroutreach.org/resource/solar-permitting-inspection-webinar-series/#.VluBESvF-Ig>

Maximum Solar at the Heart of Urban Forests

Free webinar on solar energy use and urban tree preservation.
<http://solaroutreach.org/resource/maximum-solar-at-the-heart-of-urban-forests/#.VluCJSvF-Ig>

Jobs and the Economic Impacts of Solar

Webinar discussion on the findings of The Solar Foundation’s National Solar Jobs Census report and the International Economic Development Council’s Understanding Renewable Energy Businesses report.
<http://solaroutreach.org/resource/job-economic-impact-solar/#.VluDACvF-Ig>

Utility Community Solar: Program Development and Implementation

Webinar discussion on the U.S. Department of Energy’s Sunshot Solar Outreach Partnership Utility Community Solar Handbook, as well as community solar program development and implementation from the utility’s perspective.
<http://solaroutreach.org/resource/utility-community-solar-program-development-implementation/#.VluEBCvF-Ih>

Solarize North Carolina

Webinar case study on how Asheville is currently creating its own Solarize program and provides an open dialogue discussing how other cities can implement their own Solarize campaigns.
<http://solaroutreach.org/resource/solarize-north-carolina/#.VI8YuyvF-Ig>

Solar Powering Your Community Organization: Updating Design Guidelines for Solar

Webinar discussion on addressing homeowner association design guidelines and potential barriers that come with them, while respecting homeowner associations’ authority to protect other community interests. <http://solaroutreach.org/resource/webinar-solar-powering-your-community-association-updating-design-guidelines-for-solar-2/#.VI8Z3SvF-Ig>

Commercial PACE: Program Development and Implementation

This webinar informs participants of the important aspects of Commercial PACE programs that make them viable financing tools for state and local governments looking to support investment in energy efficiency and resource efficiency in office, multi-family, retail spaces, warehouses, and other commercial properties.
<http://solaroutreach.org/resource/webinar-commercial-pace-program-development-implementation/#.VI8d-ivF-Ig>

Untangling PV Systems and Property Taxes

In this webinar the leading authors of the Solar Outreach Partnership’s publication entitled Property Taxes and Solar PV Systems: Policies, Practices, and Issues discuss their key findings. <http://solaroutreach.org/resource/webinarpropertytaxes/#.VI8eqCvF-Ig>

Getting to a Win-Win: Distributed Solar and Utility Cost Recovery

In this webinar, we feature Solar Outreach Partnership’s recent publication entitled Rethinking Standby and Fixed Cost Charges: Regulatory and Rate Design Pathways to Deeper Solar Cost Reductions. The lead authors discuss the key findings of their report.
<http://solaroutreach.org/resource/getting-win-win-distributed-solar-utility-cost-recovery/>

YOU'RE INVITED! ICLEI WORLD CONGRESS 2015

On behalf of Mayor Park Won-soon from Seoul, we would like to invite you to the ICLEI World Congress 2015, from April 8 to 12. Global leaders on urban sustainability will convene in Seoul, a world-class sustainable megacity, for ICLEI's largest showcase of its groundbreaking work towards a viable urban future. Local governments will share best practices and lessons learned from on the ground projects and local action, while keynote speakers will inspire and motivate. The five-day program of exchange and networking will focus on delivering tangible city solutions across a wide range of areas including low-carbon development; resilience and adaptation; biodiversity; water; EcoMobility; green urban economy; smart urban infrastructure, and many more.



ICLEI World Congress 2015

SUSTAINABLE SOLUTIONS FOR AN URBAN FUTURE

8 - 12 April 2015 • Seoul, Republic of Korea

Proudly hosted by



www.iclei.org/worldcongress2015

BECOME AN ICLEI USA MEMBER

Contact:

J.R. Killigrew
Senior Program Officer &
National Membership Coordinator
jr.killigrew@iclei.org
(510) 844-0699 ext. 307
+1 (855) 504-8097

VISIT ICLEI ONLINE

ICLEI USA

414 13th St., Suite 400
Oakland, California 94612
Phone: +1 (510) 844-0699
icleiusa.org
[@iclei_usa](https://twitter.com/iclei_usa)

ICLEI World Secretariat

Kaiser-Friedrich-Str. 7
53113 Bonn, Germany
Phone: +49-228 / 97 62 99-00
iclei.org
[@iclei](https://twitter.com/iclei)